

# How to do FASHION

Size chart EU/UK/US												
	32/4/0	34/6/2	36/8/4	38/10/6	40/12/8	42/14/10	44/16/12	46/18/14	48/20/16	50/22/18	52/24/20	54/26/22
<b>CHEST</b>												
CM	80	84	88	92	96	101	106	112	118	124	131	138
INCH	31.5	33.1	34.6	36.2	37.8	39.8	41.7	44.1	46.5	48.8	51.6	54.3
<b>WAIST</b>												
CM	62	66	70	74	78	83	88	94	100	106	113	120
INCH	24.4	26.0	27.6	29.1	30.7	32.7	34.6	37.0	39.4	41.7	44.5	47.2
<b>HIP</b>												
CM	90	94	98	102	106	111	116	122	128	134	141	148
INCH	35.4	37.0	38.6	40.2	41.7	43.7	45.7	48.0	50.4	52.8	55.5	58.3



## HOW TO MEASURE

**Chest** - measure at the top of the bust

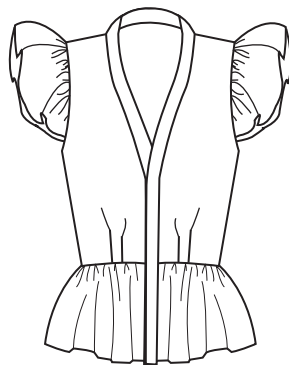
**Waist** - measure at the narrowest point

**Hip** - Measure at the widest point

All measurement  
have to be horizontal

Finished measurement No.9 RÖNNE													
	32/4/0	34/6/2	36/8/4	38/10/6	40/12/8	42/14/10	44/16/12	46/18/14	48/20/16	50/22/18	48/24/20	54/26/22	
<b>CHEST VERSION 1</b>													
CM	93	97	101	105	109	114	119	125	131	137	144	151	
INCH	36.6	38.2	39.8	41.3	42.9	44.9	46.9	49.2	51.6	53.9	56.7	59.4	
<b>CHEST VERSION 2</b>													
CM	84	88	92	96	100	105	110	116	122	128	135	142	
INCH	33.1	34.6	36.2	37.8	39.4	41.3	43.3	45.7	48.0	50.4	53.1	55.9	
<b>WAIST VERSION 1 &amp; 2</b>													
CM	72	76	80	84	88	93	98	104	110	116	123	130	
INCH	28.3	29.9	31.5	33.1	34.6	36.6	38.6	40.9	43.3	45.7	48.4	51.2	
<b>LENGTH FROM TOP OF SHOULDER TO BOTTOM VERSION 1</b>													
CM	63	64	65	66	67	68	69	70	71	72	73	74	
INCH	24.8	25.2	25.6	26.0	26.4	26.8	27.2	27.6	28.0	28.3	28.7	29.1	
<b>LENGTH FROM TOP OF SHOULDER TO BOTTOM VERSION 2</b>													
CM	41.5	42	42.5	43	43.5	44	44.5	45	45.5	46	46.5	47	
INCH	16.3	16.5	16.7	16.9	17.1	17.3	17.5	17.7	17.9	18.1	18.3	18.5	

VERSION 1



VERSION 2

