

How to do FASHION

| Size chart EU/UK/US | | | | | | | | | | | | | |
|---------------------|--------|--------|--------|---------|---------|----------|----------|----------|----------|----------|----------|----------|--|
| | 32/4/0 | 34/6/2 | 36/8/4 | 38/10/6 | 40/12/8 | 42/14/10 | 44/16/12 | 46/18/14 | 48/20/16 | 50/22/18 | 52/24/20 | 54/26/22 | |
| CHEST | | | | | | | | | | | | | |
| CM | 80 | 84 | 88 | 92 | 96 | 101 | 106 | 112 | 118 | 124 | 131 | 138 | |
| INCH | 31.5 | 33.1 | 34.6 | 36.2 | 37.8 | 39.8 | 41.7 | 44.1 | 46.5 | 48.8 | 51.6 | 54.3 | |
| WAIST | | | | | | | | | | | | | |
| CM | 62 | 66 | 70 | 74 | 78 | 83 | 88 | 94 | 100 | 106 | 113 | 120 | |
| INCH | 24.4 | 26.0 | 27.6 | 29.1 | 30.7 | 32.7 | 34.6 | 37.0 | 39.4 | 41.7 | 44.5 | 47.2 | |
| HIP | | | | | | | | | | | | | |
| CM | 90 | 94 | 98 | 102 | 106 | 111 | 116 | 122 | 128 | 134 | 141 | 148 | |
| INCH | 35.4 | 37.0 | 38.6 | 40.2 | 41.7 | 43.7 | 45.7 | 48.0 | 50.4 | 52.8 | 55.5 | 58.3 | |



HOW TO MEASURE

Chest - measure at the top of the bust

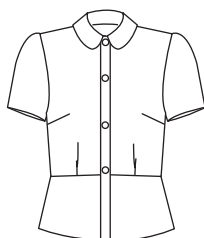
Waist - measure at the narrowest point

Hip - Measure at the widest point

All measurement have to be horizontal

| Finished measurement No.8 SVANEKE VERSION 1 | | | | | | | | | | | | | |
|--|--------|--------|--------|---------|---------|----------|----------|----------|----------|----------|----------|----------|--|
| | 34/6/1 | 34/6/2 | 36/8/4 | 38/10/6 | 40/12/8 | 42/14/10 | 44/16/12 | 46/18/14 | 48/20/16 | 50/22/18 | 52/24/20 | 54/26/22 | |
| CHEST | | | | | | | | | | | | | |
| CM | 83 | 87 | 91 | 95 | 99 | 104 | 109 | 115 | 121 | 127 | 134 | 141 | |
| INCH | 32.7 | 34.3 | 35.8 | 37.4 | 39.0 | 40.9 | 42.9 | 45.3 | 47.6 | 50.0 | 52.8 | 55.5 | |
| WAIST | | | | | | | | | | | | | |
| CM | 64 | 68 | 72 | 76 | 80 | 85 | 90 | 96 | 102 | 108 | 115 | 122 | |
| INCH | 25.2 | 26.8 | 28.3 | 29.9 | 31.5 | 33.5 | 35.4 | 37.8 | 40.2 | 42.5 | 45.3 | 48.0 | |
| FULL BOTTOM MEASUREMENT | | | | | | | | | | | | | |
| CM | 103 | 107 | 111 | 115 | 119 | 124 | 129 | 135 | 141 | 147 | 154 | 161 | |
| INCH | 40.6 | 42.1 | 43.7 | 45.3 | 46.9 | 48.8 | 50.8 | 53.1 | 55.5 | 57.9 | 60.6 | 63.4 | |
| LENGTH FROM TOP OF SHOULDER TO BOTTOM | | | | | | | | | | | | | |
| CM | 51 | 52.5 | 54 | 55.5 | 57 | 58.75 | 60.5 | 62.25 | 64 | 65.75 | 67.5 | 69.25 | |
| INCH | 20.1 | 20.7 | 21.3 | 21.9 | 22.4 | 23.1 | 23.8 | 24.5 | 25.2 | 25.9 | 26.6 | 27.3 | |
| Finished measurement No.8 SVANEKE VERSION 2 | | | | | | | | | | | | | |
| | 34/6/1 | 34/6/2 | 36/8/4 | 38/10/6 | 40/12/8 | 42/14/10 | 44/16/12 | 46/18/14 | 48/20/16 | 50/22/18 | 52/24/20 | 54/26/22 | |
| CHEST | | | | | | | | | | | | | |
| CM | 82 | 86 | 90 | 94 | 98 | 103 | 108 | 114 | 120 | 126 | 133 | 140 | |
| INCH | 32.3 | 33.9 | 35.4 | 37.0 | 38.6 | 40.6 | 42.5 | 44.9 | 47.2 | 49.6 | 52.4 | 55.1 | |
| LENGTH FROM TOP OF SHOULDER TO BOTTOM | | | | | | | | | | | | | |
| CM | 41 | 41.5 | 42 | 42.5 | 43 | 43.75 | 44.5 | 45.25 | 46 | 46.75 | 47.5 | 48.25 | |
| INCH | 16.1 | 16.3 | 16.5 | 16.7 | 16.9 | 17.2 | 17.5 | 17.8 | 18.1 | 18.4 | 18.7 | 19.0 | |
| FULL BOTTOM MEASUREMENT | | | | | | | | | | | | | |
| CM | 81 | 85 | 89 | 93 | 97 | 102 | 107 | 113 | 119 | 125 | 132 | 139 | |
| INCH | 31.9 | 33.5 | 35.0 | 36.6 | 38.2 | 40.2 | 42.1 | 44.5 | 46.9 | 49.2 | 52.0 | 54.7 | |
| Finished measurement No.8 SVANEKE VERSION 3 | | | | | | | | | | | | | |
| | 34/6/1 | 34/6/2 | 36/8/4 | 38/10/6 | 40/12/8 | 42/14/10 | 44/16/12 | 46/18/14 | 48/20/16 | 50/22/18 | 52/24/20 | 54/26/22 | |
| WAIST | | | | | | | | | | | | | |
| CM | 62 | 66 | 70 | 74 | 78 | 83 | 88 | 94 | 100 | 106 | 113 | 120 | |
| INCH | 24.4 | 26.0 | 27.6 | 29.1 | 30.7 | 32.7 | 34.6 | 37.0 | 39.4 | 41.7 | 44.5 | 47.2 | |
| HIP | | | | | | | | | | | | | |
| | FREE | | | | | | | | | | | | |
| LENGTH FROM WAIST TO BOTTOM | | | | | | | | | | | | | |
| CM | 65 | 66 | 67 | 68 | 69 | 70 | 71 | 72 | 73 | 74 | 75 | 76 | |
| INCH | 25.6 | 26.0 | 26.4 | 26.8 | 27.2 | 27.6 | 28.0 | 28.3 | 28.7 | 29.1 | 29.5 | 29.9 | |
| FULL BOTTOM MEASUREMENT | | | | | | | | | | | | | |
| CM | 208 | 212 | 216 | 220 | 224 | 229 | 234 | 240 | 246 | 252 | 259 | 266 | |
| INCH | 81.9 | 83.5 | 85.0 | 86.6 | 88.2 | 90.2 | 92.1 | 94.5 | 96.9 | 99.2 | 102.0 | 104.7 | |

VERSION 1



VERSION 2



VERSION 3

