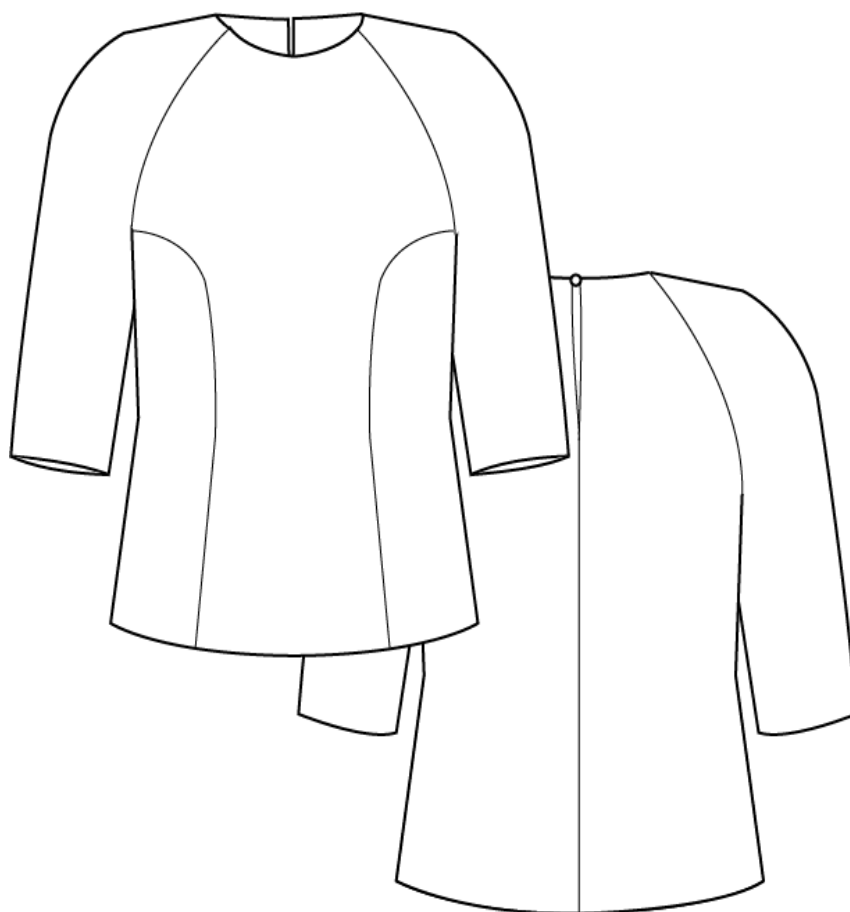




# NO. 3 KASTRUP

---



---

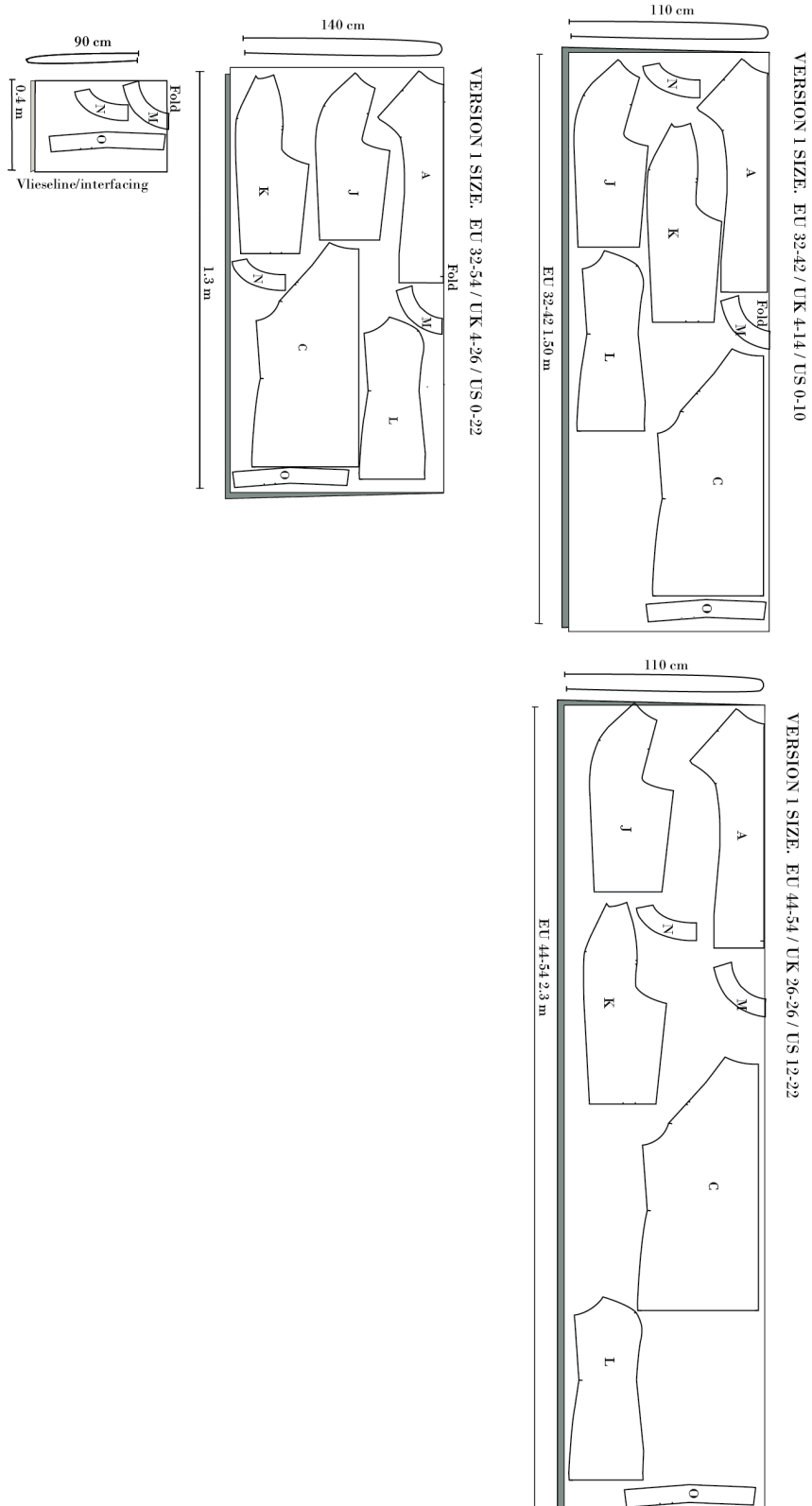
VERSION 3





## Klippevejledning

On each pattern piece, you will find a capital letter. On the cutting layout plan, you will find the same capital letters so that you can easily see which pattern pieces to use for the view you have chosen.





---

## SEWING

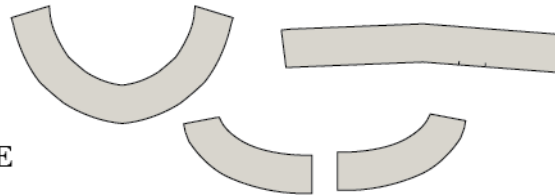
NOTE! THE PATTERN HAS 1 CM SEAM ALLOWANCES INCLUDED, UNLESS OTHERWISE NOTED.

1. Cut all your pieces in fabric and interfacing
2. Press the interfacing to the pattern piece M, N & O.

● RET

○ WRANG

● VLIESELINE



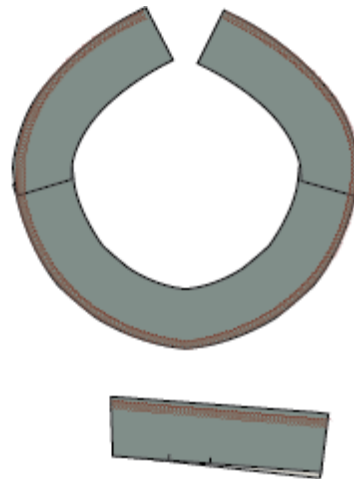
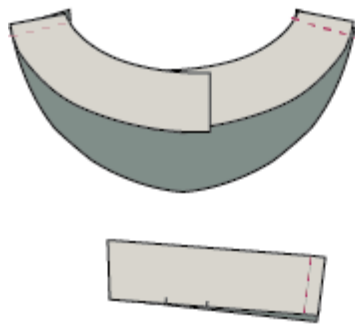
3. Sew the shoulder seams of the neck facings together, right sides together.

4. Sew the sleeve hem facing together on the short side, right sides together. Press all seams open.

5. Overlock:

The neck facing on the long raw edge.

The sleeve hem facings on the raw edge that has no notches.





---

6. Sew the side front piece to the centre front piece, right sides together.

7. Overlock

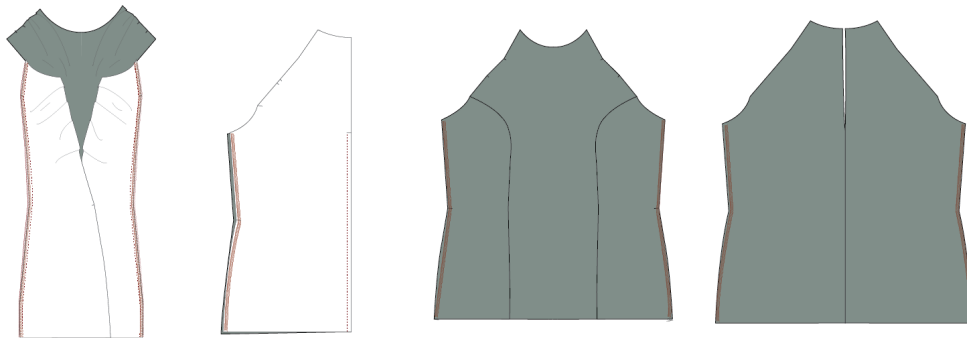
Side front seams all layers together.

centre back seams separately.

side seams on both back and front pieces separately.

8. sew the centre back seam together, right sides together, stop at notch.

9. sew the side seams, right sides together. Press all seams open.

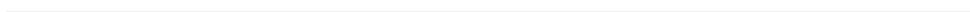
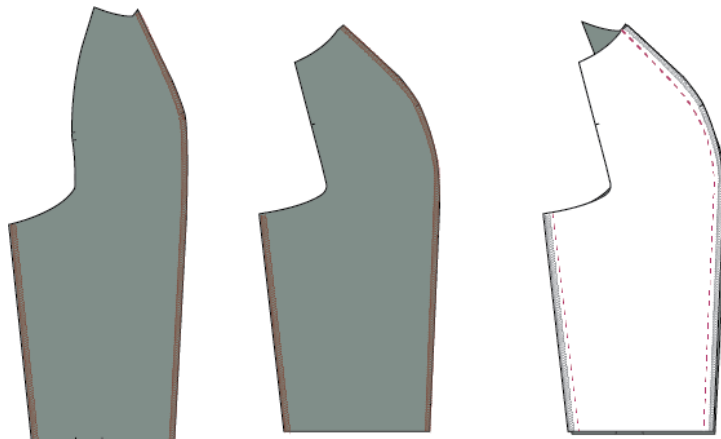


### Sew the sleeves

10. Overlock all the long edges on both front and back sleeve pieces

11. Sew the sleeve shoulder seam, right sides together.

12. Sew the sleeve inner seam right sides together, press seams open.





---

13. Sew the sleeves in the bodice.

14. Overlock the armscye all layers together and press the seam towards the sleeve.

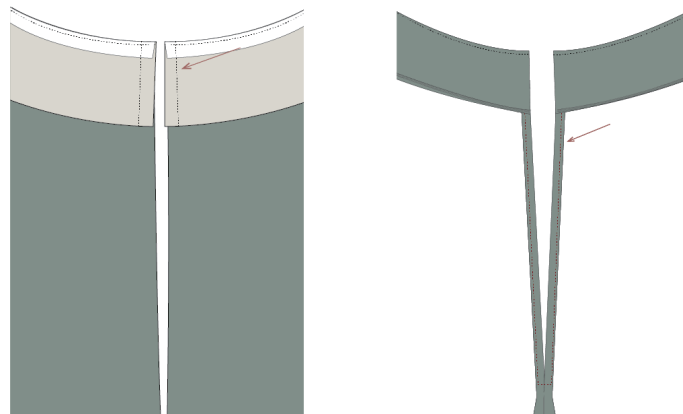
15. Place the neck facing to the neckline, right sides together, and sew.

16. Clip notched to the seam allowance and understitch the neck facing.



17. Fold the neck facing to the right side of the blouse and sew the facing to the blouse at the centre back.

18. Finish the centre back opening by folding the seam allowance 0.5 x 0.5 cm. the easiest way is to press it nicely to avoid using too many pins. Sew along the folded edge down to the slit end, turn and sew up on the other side of the slit.



19. Place the sleeve hem facing to the bottom of the sleeve, right sides together, and sew.

20. Press the facing out and understitch the facing.

21. Press the facing into the blouse. you can now make a topstitch 3.5 cm from edge or hem with an invisible catch stitch.

22. Hem the blouse by folding 1 x 1 cm and sew along the folded edge.

