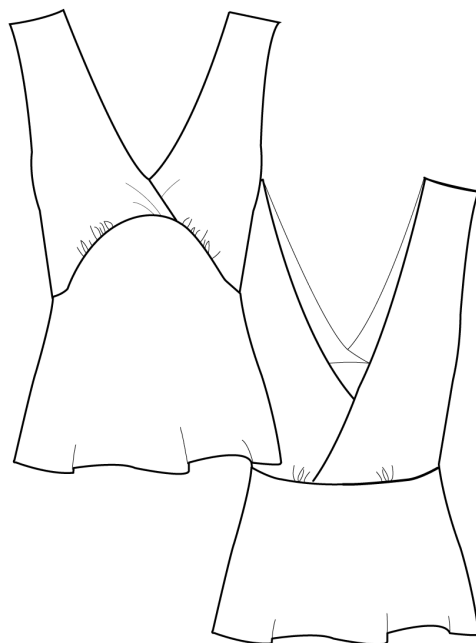




NO. 20 NEW YORK



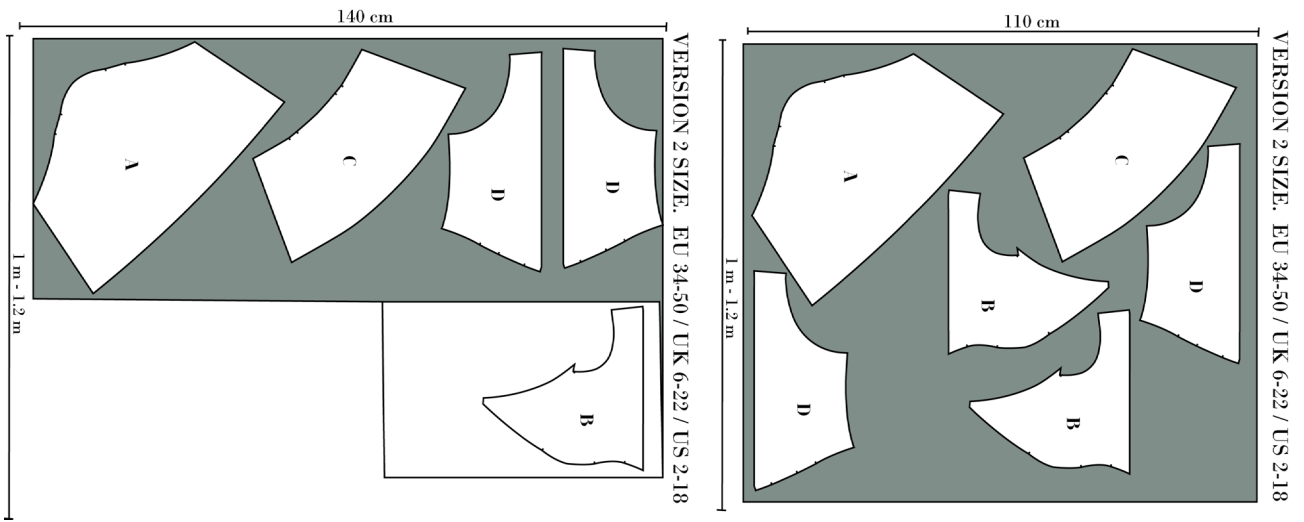
VERSION 2





Cutting

Match the lettered pattern pieces (A, B, C etc.) to the cutting layout plan for the view you have chosen.





Sewing

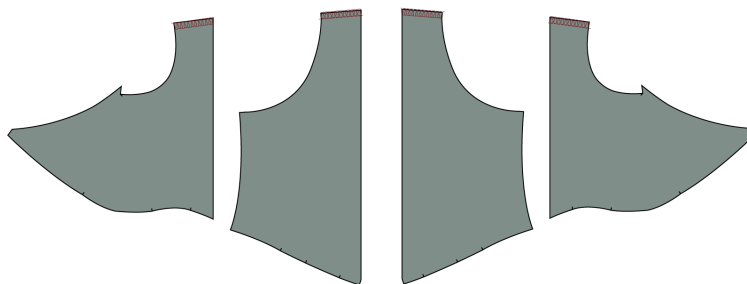
NB! THE PATTERN HAS 1 CM SEAM ALLOWANCES INCLUDED UNLESS OTHERWISE NOTED.

1. Cut out all pieces in fabric

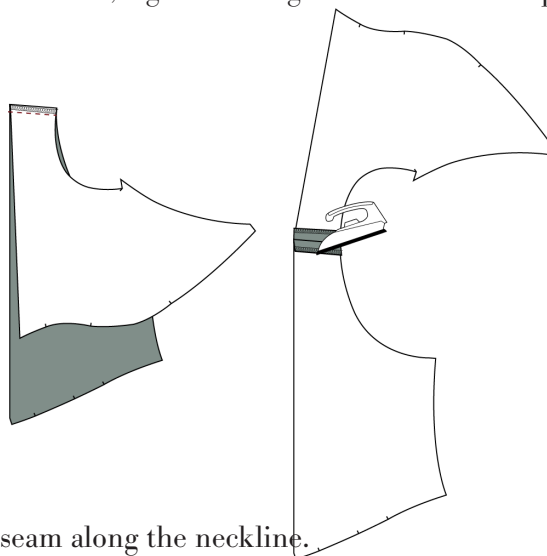
NB! Pattern piece A & C is cut on bias.

2. Overlock the shoulder seam.

- RIGHT SIDE
- WRONG SIDE



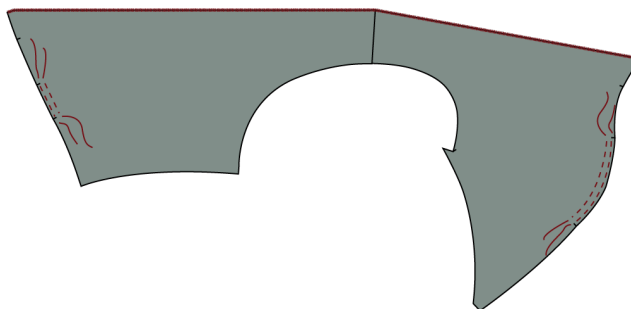
3. Sew the shoulder seam, right sides together. Press seam open.



4. Make a rolled seam along the neckline.

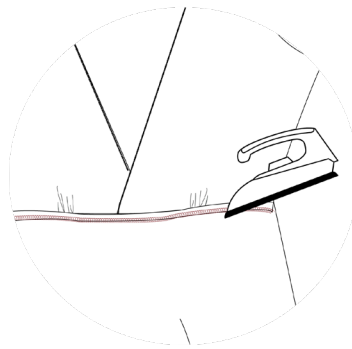
5. Machine baste a gathering thread between the notches on the top-front piece.

6. Machine baste a gathering thread between the notches on the top-back piece.

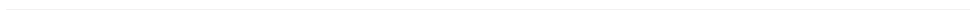
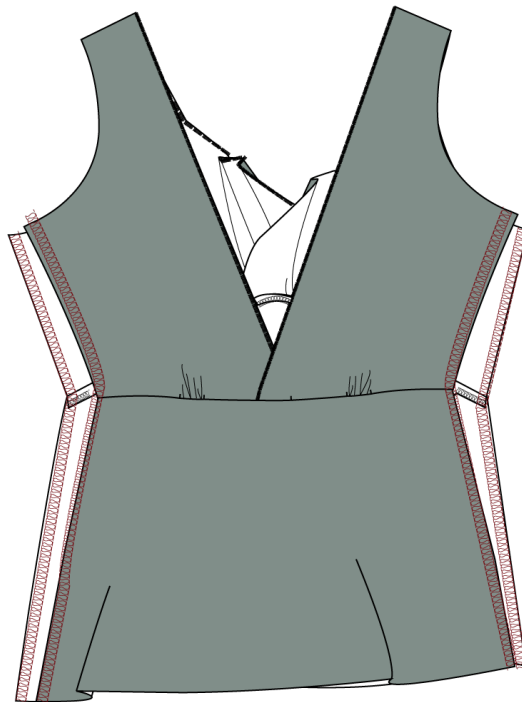




-
7. Pin the top-front piece (B) to the front bottom (A) and gather between the notches. The top front pieces are overlapping.
 8. Pin the top-back piece (D) to the back bottom (C) and gather between the notches. The top back pieces are overlapping.
 9. Sew the top front to the bottom.
 10. Sew the top back to the bottom.

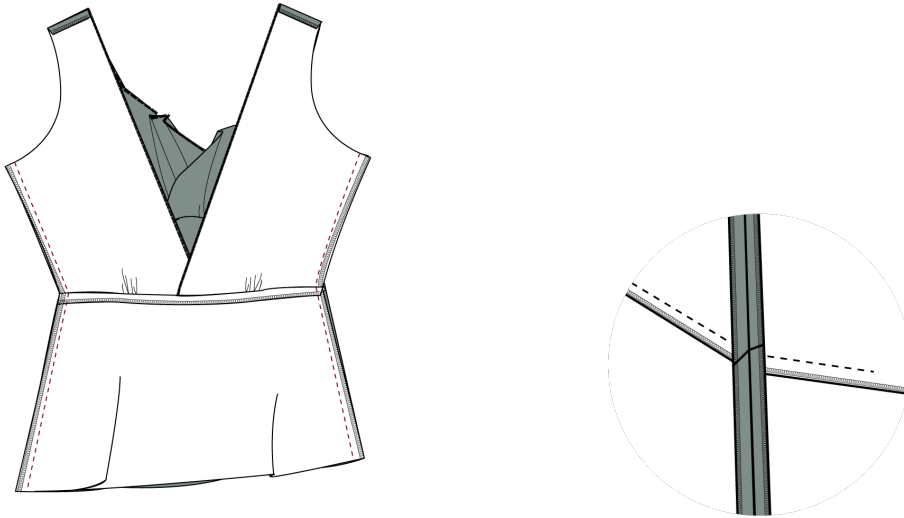


11. Overlock both seams and press down





12. Overlock the side seams separately.



13. Sew the side seams, right sides together. NB! Match the cutline in the side seam. Press seam open.

14. Sew a rolled seam in the armhole.

15. Finish the top with a rolled hem.

