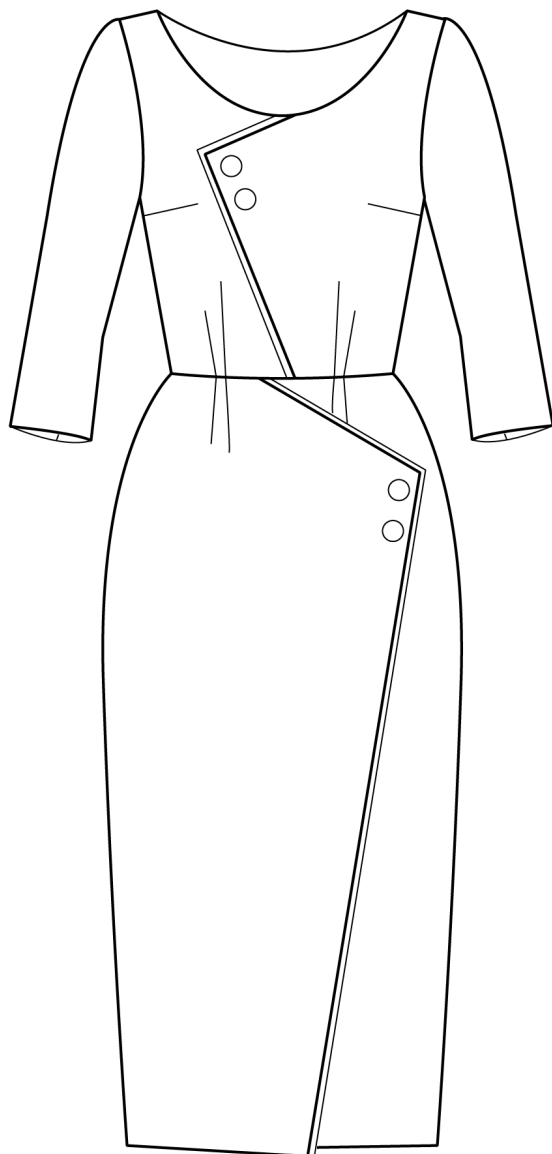




NO. 13 PARIS



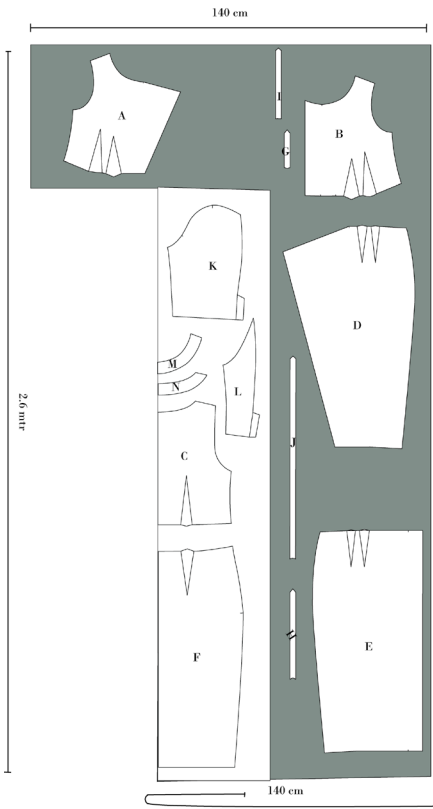
VERSION 2



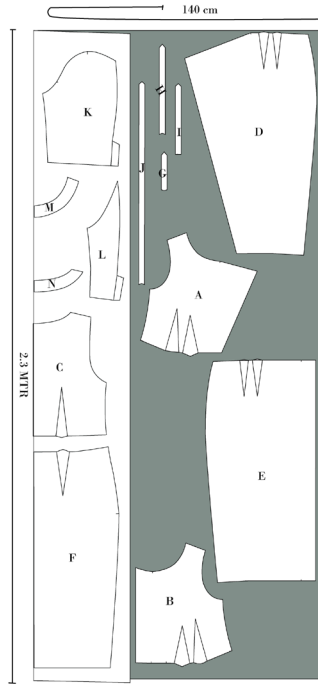


CUTTING FABRIC:

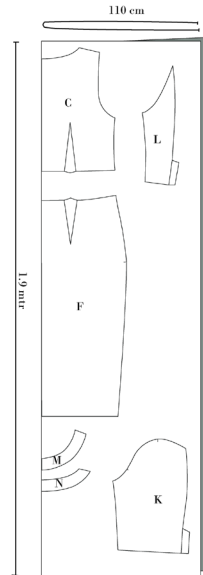
On each pattern piece you will find a capital letter. On the cutting layout plan, you will find the same capital letters so that you can easily see which pattern pieces to use for the view you have chosen.



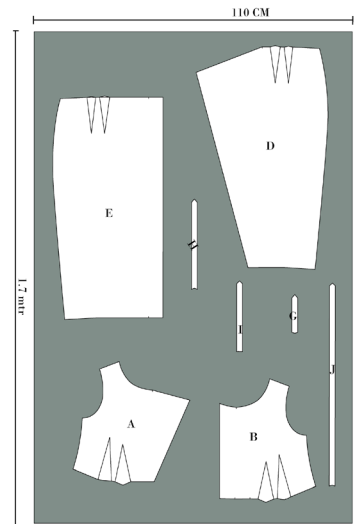
VERSION 2 SIZE EU 42-48 / UK 14-20 / US 10-16



VERSION 2 SIZE: EU 34-40 / UK 6-12 / US 2-8



VERSION 2 SIZE EU 34-48 / UK 6-20 / US 2-16





Sewing

Nb! The pattern has 1 cm seam allowances included, unless otherwise noted.

1. Begin by cutting all pieces in fabric, making sure you transfer all markings to the fabric by clipping into the seam allowances. See how to mark by clipping here.

2. Press interfacing to the neckline facing pieces (N & M)



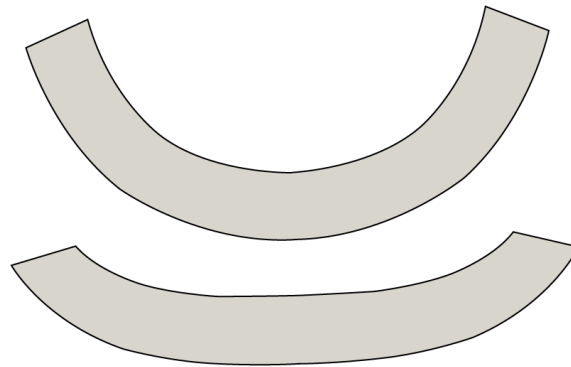
RIGHT SIDE



WRONG SIDE



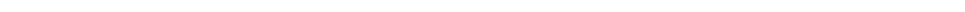
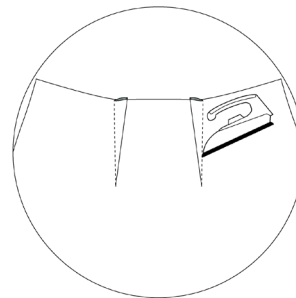
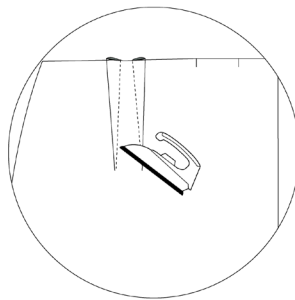
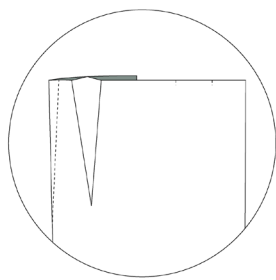
INTERFACING



3. Sew all darts, right sides together, on all pieces.

4. Press the vertical darts on the front pieces towards center front. Press the horizontal darts upwards.

5. Press all darts on the back pieces towards center back.





6. Overlock the seam allowances of the:

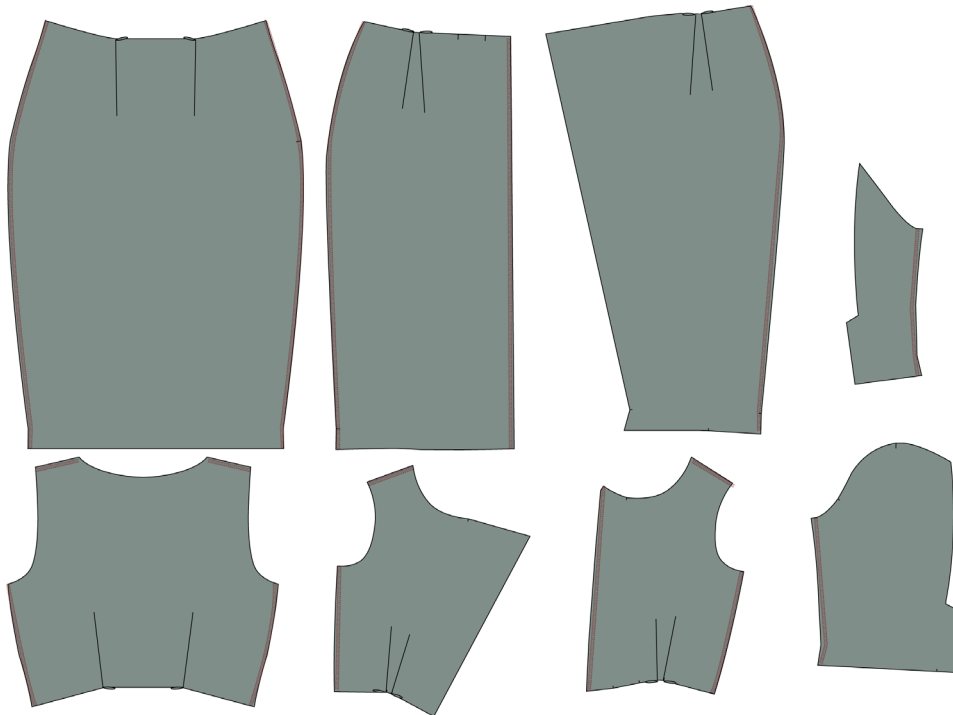
Side seam on both front and back of bodice and skirt.

Front edge of the straight front pieces.

Hem of the skirt.

The two short sleeve seams.

Shoulder seams



SEW THE SLEEVESv

7. Sew the two sleeve pieces together at the long seam that has a square shape at the hem, right sides together.

8. Overlock the seam allowances together. See video of how to overlock the corner [here](#).

9. Press the seam allowances towards the smaller sleeve piece.

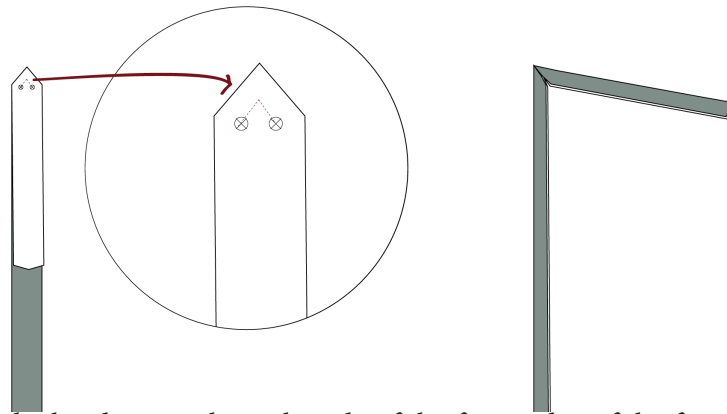
10. Sew the short sleeve seam, right sides together. Press the seam open.

11. Overlock the sleeve hem.



SEW THE BODICE:

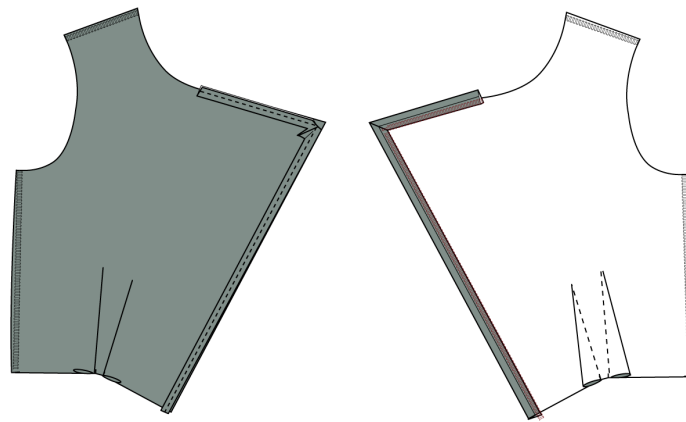
12. Join the front edge binding pieces (H & G) for the bodice as shown on the sketch or see how to join them here.



13. Place the binding on the right side of the front edge of the front with the slanted front. See how to here

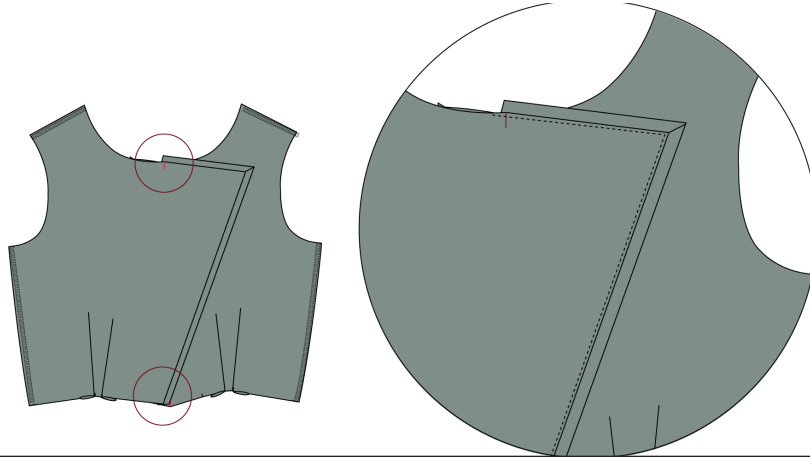
14. Sew along the edge, keeping a 1 cm seam allowance, until the slanted joint of the binding. When the needle reaches the slanted seam, stop with the needle down, lift the presser foot and turn the binding to the other edge. Then sew to the bottom of the binding.

15. Overlock the raw edges of the seam allowances together.

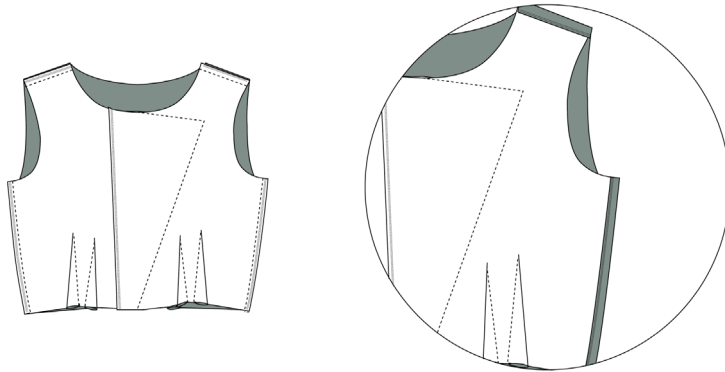




-
16. Press the overlocked side of the binding to the wrong side.
 17. Place the two front pieces on top of each other, aligning the markings. Sew the pieces together by stitching in the ditch of the seam along the edge of the dress.

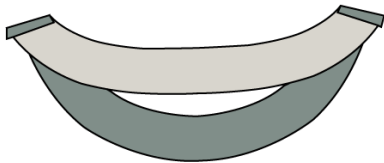
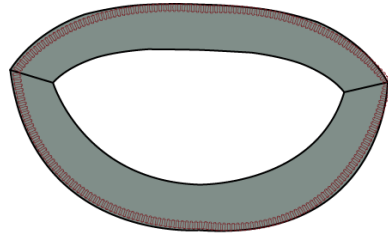
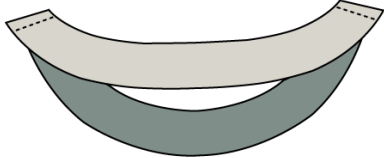


-
18. Sew the shoulder seams, right sides together.
 19. Sew the right side seam, right sides together.
 20. Sew the left side seam, until 4 cm below the armhole, right sides together.





-
21. Press the seam allowances open.
 22. Overlock the seam allowances of the long side of the neckline facing.
 23. Place the neckline facing on the neckline, right sides together. Stitch it in place.



24. Understitch the seam allowances to the facing. See video here.
25. Clip notches to the curves of the neckline seam allowances.



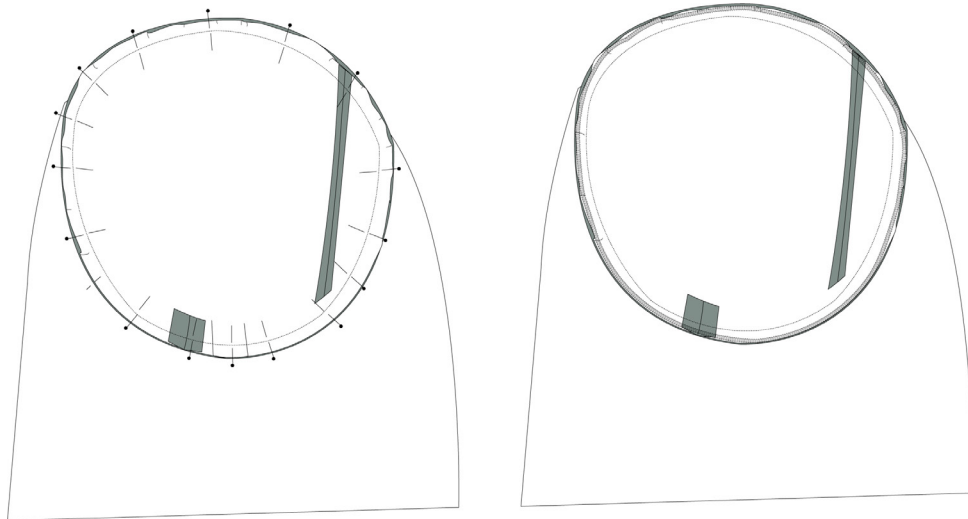
26. Press the facing in place. Fasten in the shoulder seam, to keep in place





27. Set in the sleeves.

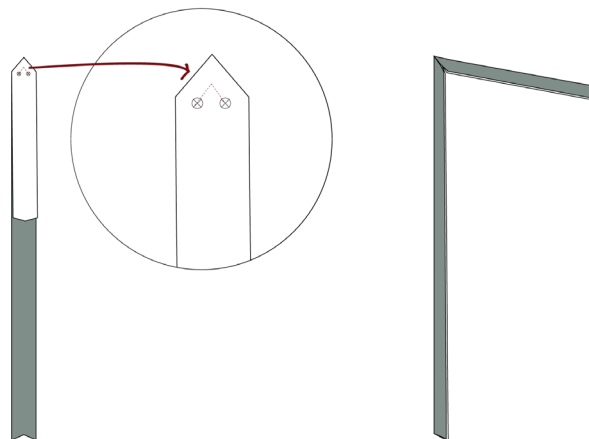
28. Overlock the seam allowances of the sleeve and armhole together and press them into the sleeves.



SEW THE SKIRT

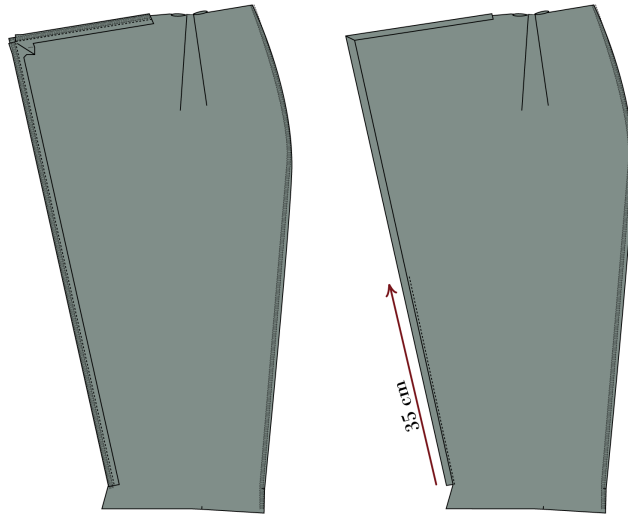
29. Join the front edge binding pieces (I & J) for the skirt as shown on the sketch or see how to join them here.

30. Sew and turn the bottom of the long front edge binding piece.

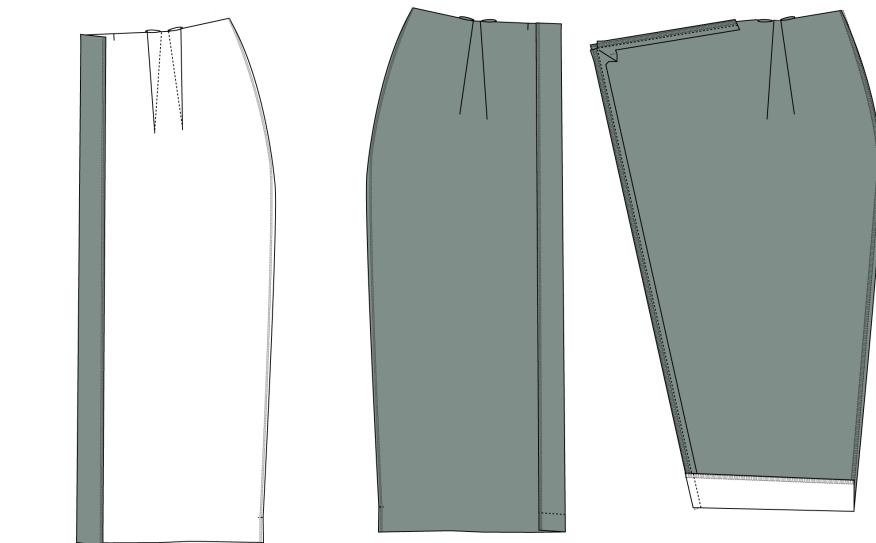




-
31. Place the binding on the right side of the front edge of the front with the slanted front. See how to here.
 32. Sew along the edge, keeping a 1 cm seam allowance, until the slanted joint of the binding. When the needle reaches the slanted seam, stop with the needle down, lift the presser foot and turn the binding to the other edge. Then sew to the hem of the binding.
 33. Overlock the raw edges of the seam allowances together.
 34. Press the overlocked side of the binding to the wrong side.
 35. Edge stitch 0.2 cm from the seam along the front edge. Begin at the hem and stop 35 cm from the hem. Do not backstitch.



36. Fold the straight front edge towards the wrong side, folding at the first marking.
37. Sew the left side seam from the hem and to 20 cm from the hem.

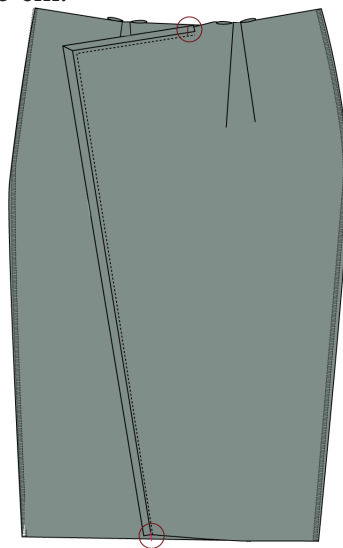




38. Sew the 4 cm hem of the front edges as shown in the sketch:

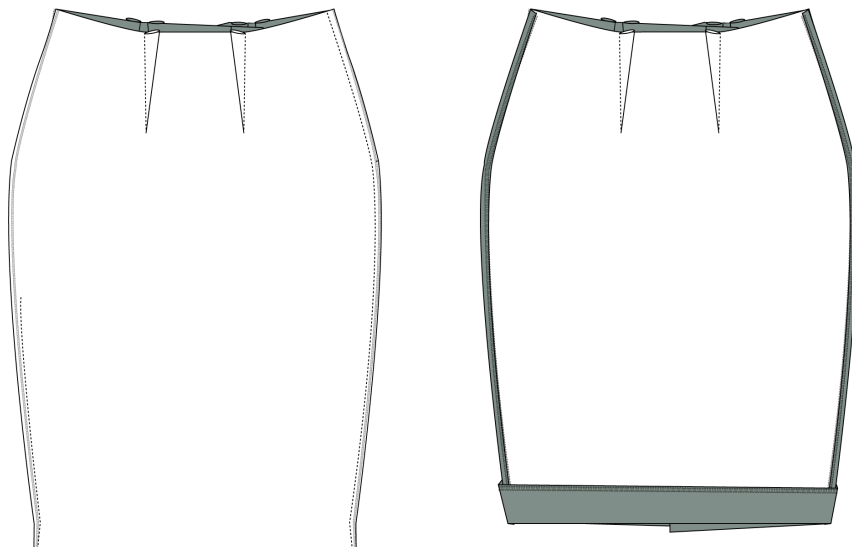
- For the overlap: Fold the front edge in the hemline (4 cm up), right sides together and stitch the hem in place along the front edge 1 cm from the edge.
- For the underlap: Fold the folded edge on the underlap, right sides together. Sew in the hemline 4 cm from bottom edge, parallel to the hem.

39. Place the two front pieces on top of each other, aligning the markings. Sew the pieces together by edge stitching 0.2 cm from the seam along the edge of the dress next to the binding. Stop about 30 cm from the hem, so that the dress has a small vent. The stitches from before meet these stitches and overlap with about 5 cm.



40. Sew the right side seam and press the seam allowances open.

41. press the hem and sew it by making an invisible hem.





JOIN THE BODICE AND SKIRT:

42. Overlock the seam allowances at the waist on bodice and skirt.
43. Sew the bodice to the skirt at the waist, right sides together. Press the seam allowances open.
44. Set in the zipper at the left side of the dress. Begin 4 cm under the arm-scye. See video here.
45. Sew the remaining part of the side seam.
46. Sew the buttons to your dress, if using.

