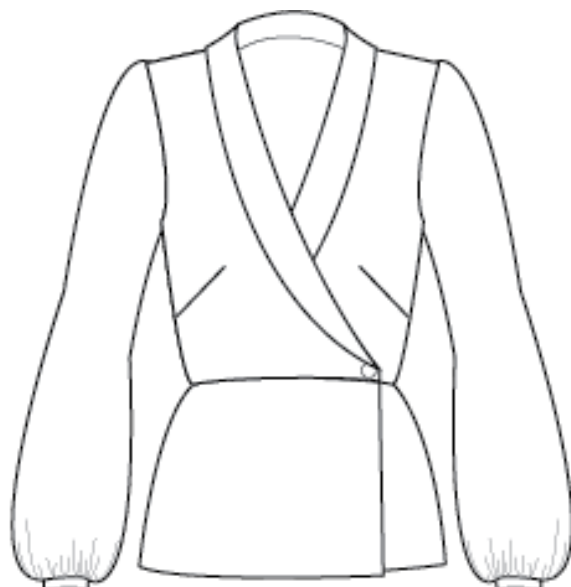




NO. 12 AALBORG



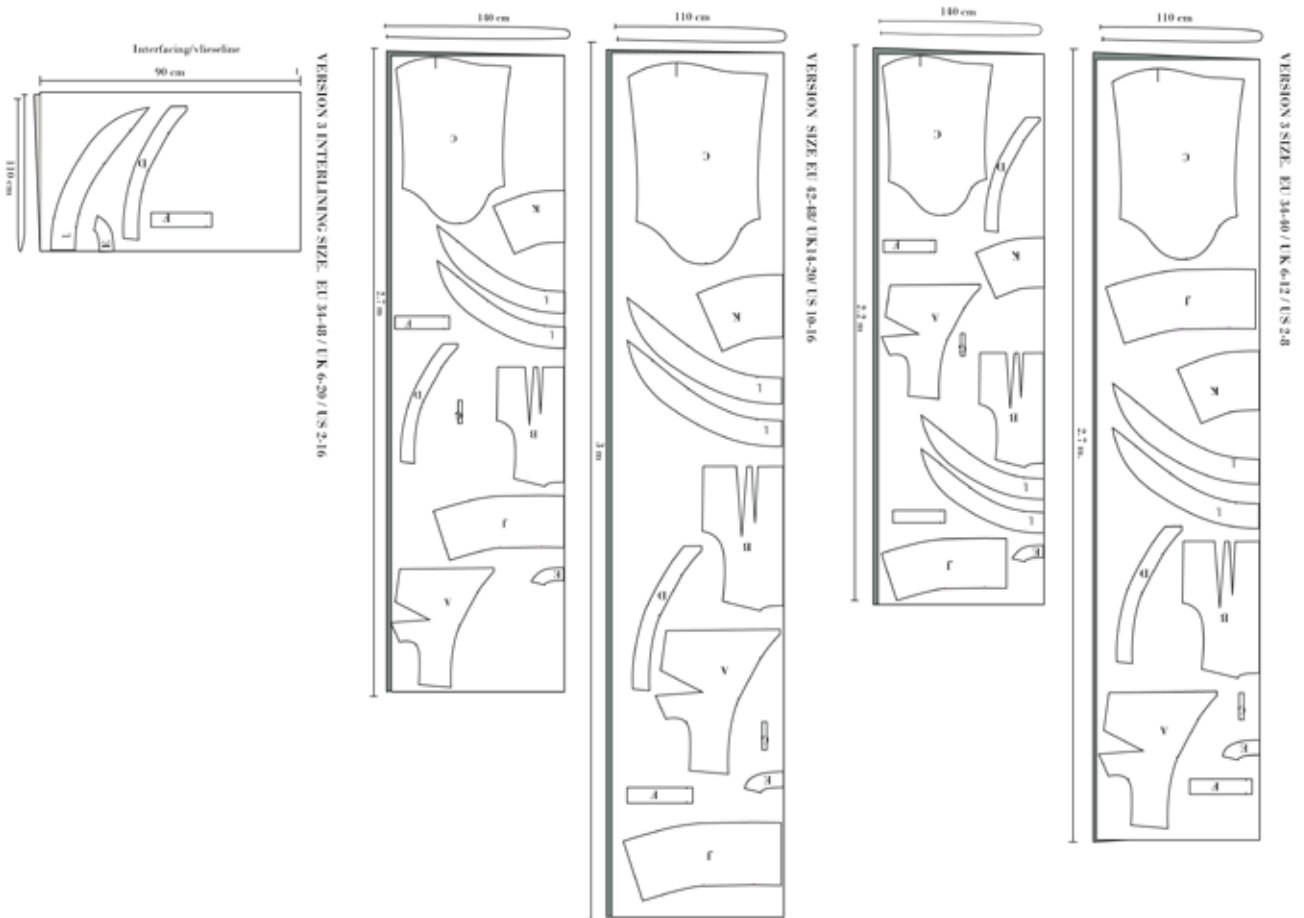
VERSION 3





Cutting Fabric:

On each pattern piece you will find a capital letter. On the cutting layout plan, you will find the same capital letters so that you can easily see which pattern pieces to use for the view you have chosen.

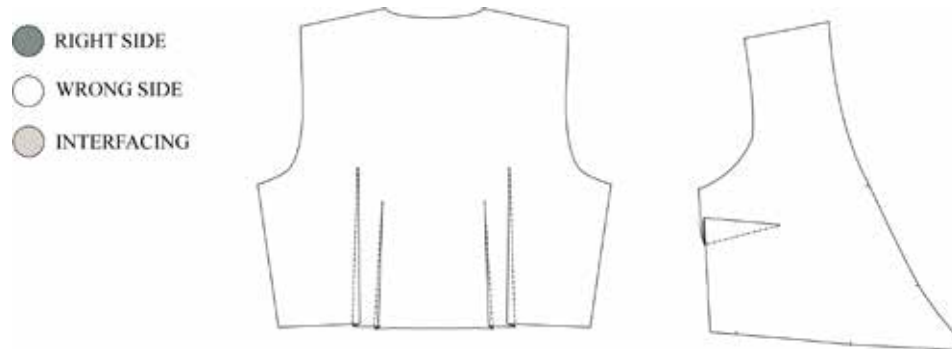




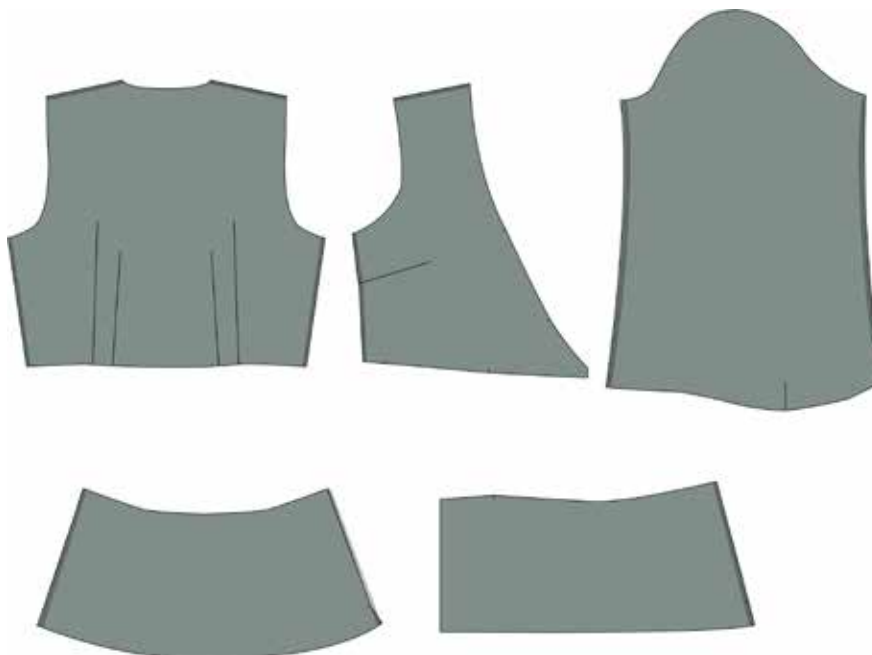
Sewing:

nb! The pattern has 1 cm seam allowances included, unless otherwise noted.

1. Cut all your pieces in fabric and interfacing
2. Press the interfacing to the neck and front facing (D & E) one collar piece (I) and the cuffs (F)
SEW THE BODICE
3. Sew all four darts on the back piece, right sides together. Press towards CB.
4. Sew the darts on the front piece, right sides together. Press upwards.

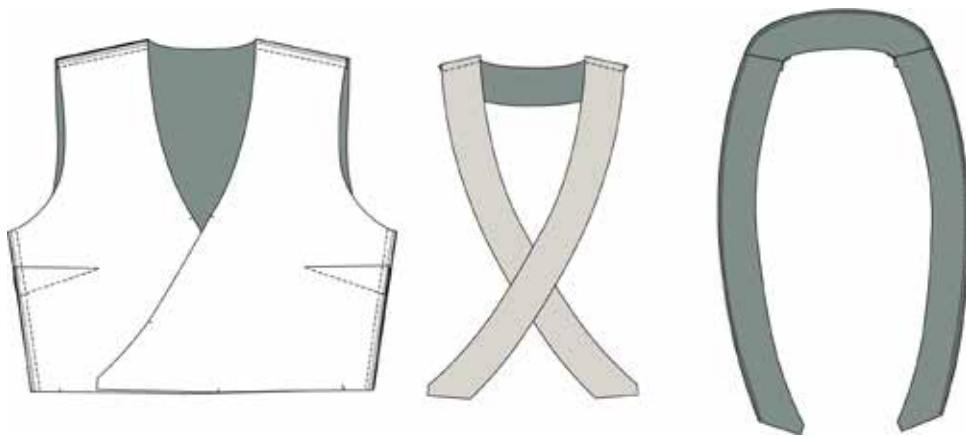


5. Overlock the shoulder seams, all side seams and the sleeve seams.

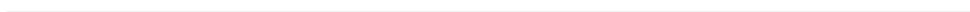
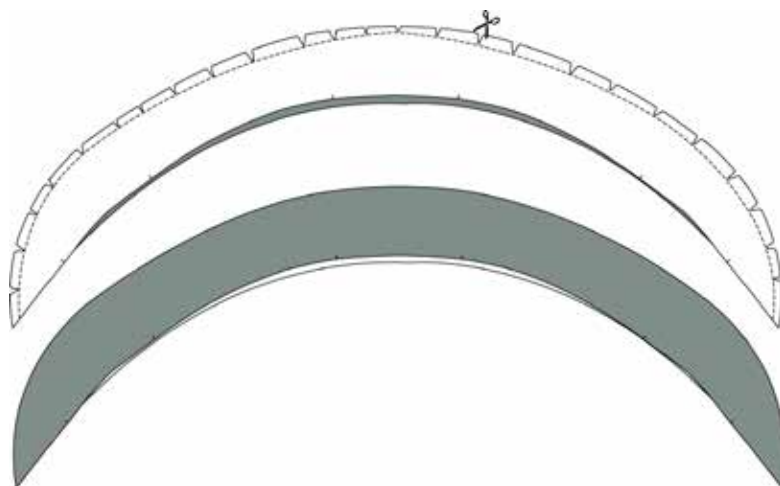




-
6. Sew the side seams, right sides together. Press the seam allowances open.
 7. Sew the shoulder seams, right sides together. Press the seam allowances open.
 8. Sew the neck- and front facing together in the shoulder seams, right sides together. Press the seam allowances open.
 9. Finish the long seam in the facing with either a bias tape, narrow hem or an overlock.



10. Sew the two collar pieces together, right sides together.
11. Clip notches to the seam allowance, turn and press the collar.



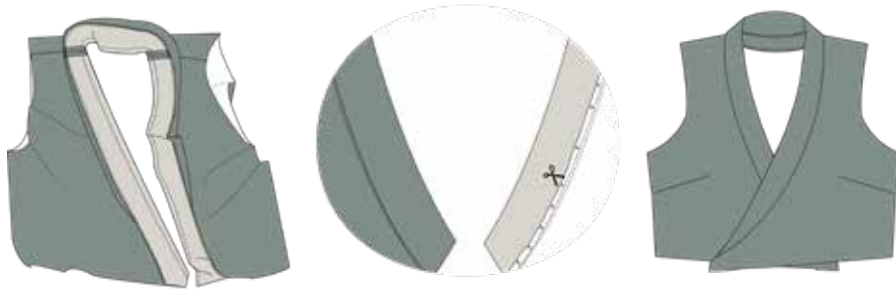


12. Place the collar in the neckline between the neck facing and the neckline on the bodice, with right sides together

13. Sew all layers together.

14. Understitch the neck facing and clip the seam allowance.

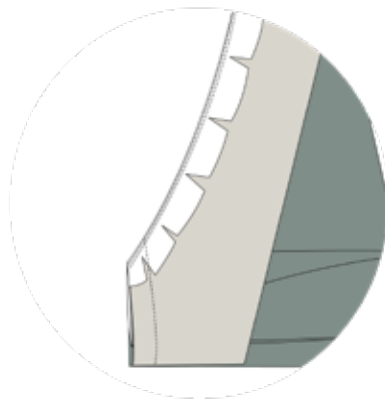
15. Press the facing and neckline.



16. Sew the ends on the front: Fold the facing so that it is placed with right sides together with the front piece.

17. Sew the front edge through all layers.

18. Turn and press.

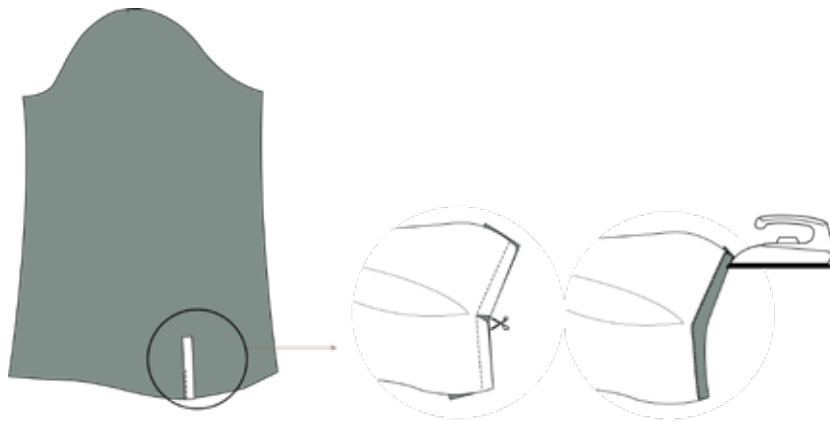




SEW THE SLEEVES

19. Place the placket piece along the vent opening, right sides together. Sew the placket piece along the edge, stopping 1 cm after the opening in the sleeve. Make sure the needle is in the fabric. Lift the presserfoot and clip up to 0,2 cm from the needle. Turn the fabric in the sewing machine and sew the other side of the vent.

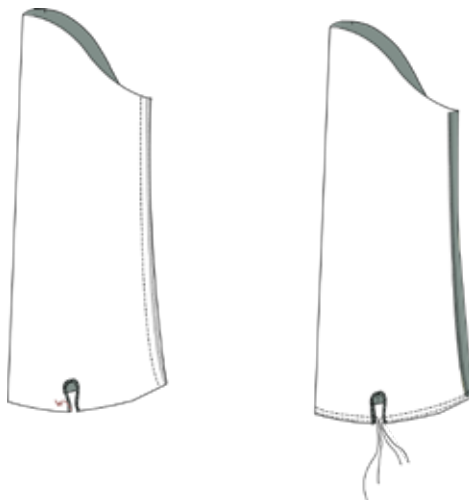
20. Fold and press the vent piece around the seam allowance and sew it to the sleeve.



21. Sew the sleeves, right sides together.

22. Fold the side of the placket, which is on the front sleeve, onto the wrong side of the fabric. This will be your overlap.

23. Gather the hem of the sleeve.

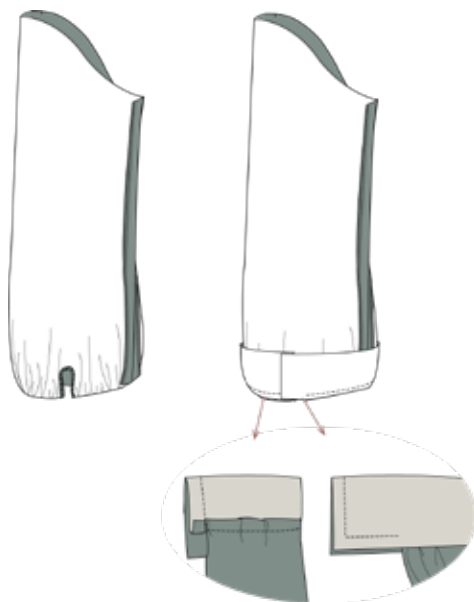




24. Gather until the sleeve fits the cuff.

25. Place the right side of the cuff onto the wrong side of the sleeve.
Sew the cuff to the sleeve

26. Fold the cuff and sew with right sides together.

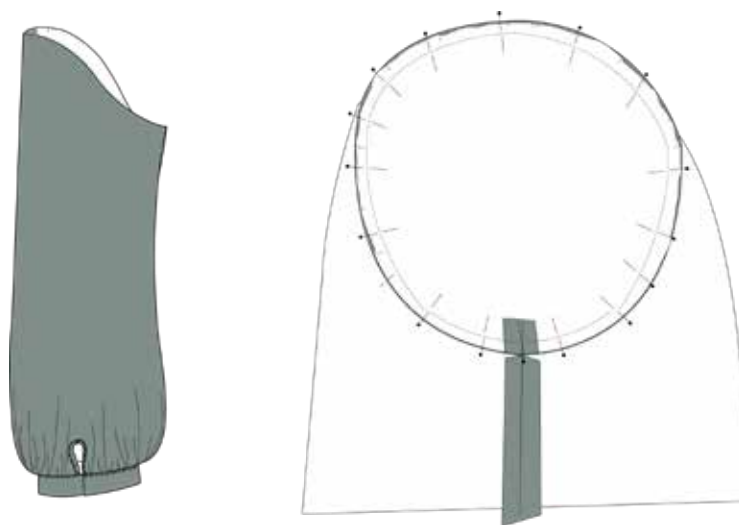


27. Turn the cuff and press the seam allowance towards the inside the cuff and press.

28. Sew the cuff from the right side, by topstitching 0,2 cm from the folded edge

29. Pin the sleeve to the armscye. There are 2 cm of ease included, which means that the sleeve cap is two cm bigger than the armscye.

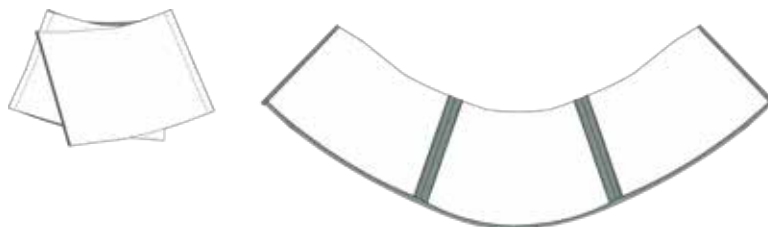
30. Set in the sleeve and finish the raw seam allowance.





Sew the bottom

31. Sew the side seams, right sides together. Press seam open.
32. Hem the overlap with a narrow hem.
33. Hem the bottom with a narrow hem.



Assemble the shirt

34. Place the bodice to the bottom in the waist, right sides together. Fold the overlap around the front of the bodice.
35. Sew the waistline and finish the raw edge.
36. Turn and press.
37. Sew two tie ribbons into the shirt. make your own. One on the left side of the front edge and one to the waist in the right sideseam.
38. Sew a buttonhole on the overlap of the cuff.
39. Make a buttonhole in the right side of the shirt. Alternatively, you can close it with and hook and eye.

