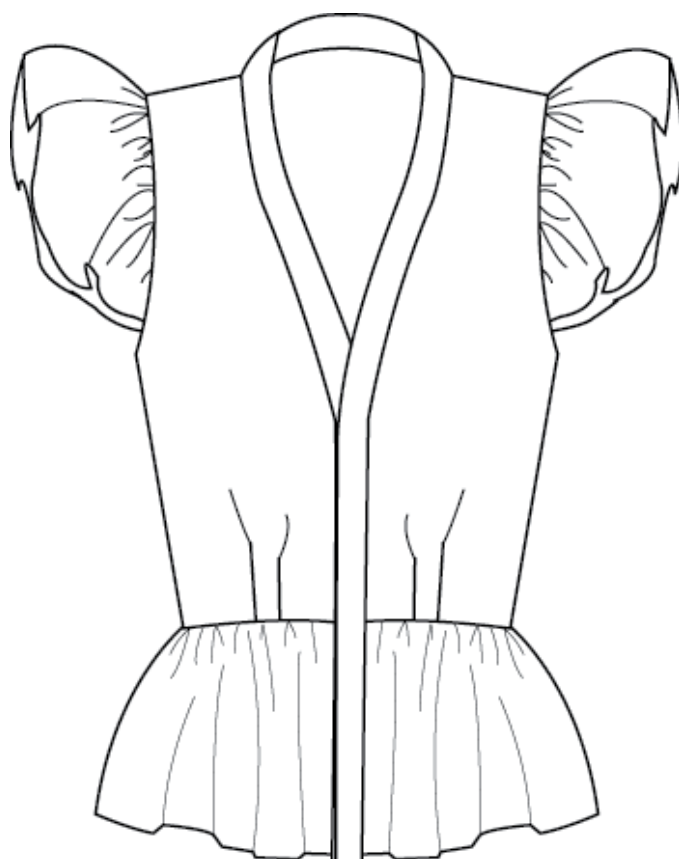




NO. 9 RØNNE



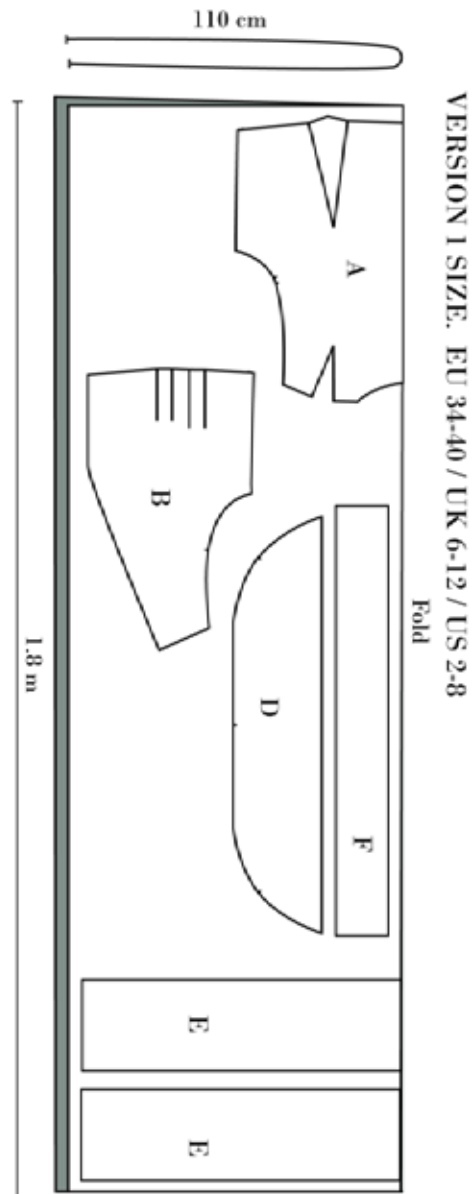
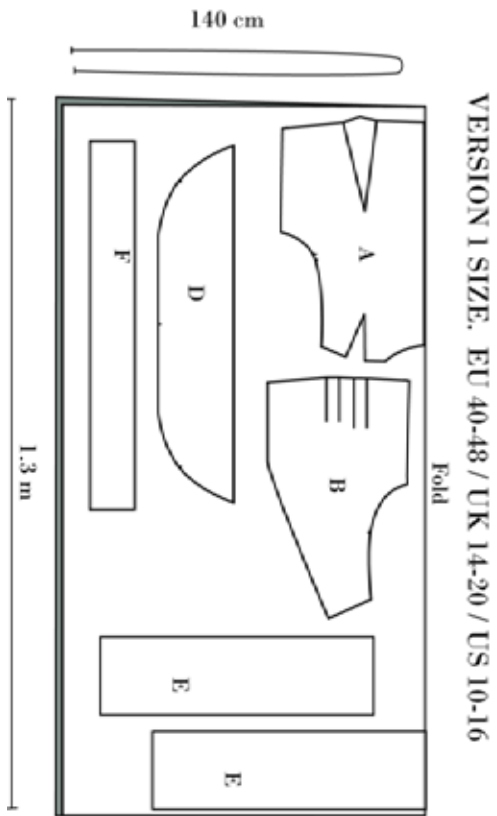
VERSION 1





CUTTING FABRIC:

On each pattern piece you will find a capital letter. On the cutting layout plan, you will find the same capital letters so that you can easily see which pattern pieces to use for the view you have chosen.





Sewing:

Nb! The pattern has 1 cm seam allowances included, unless otherwise noted.

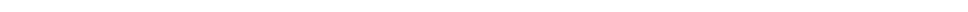
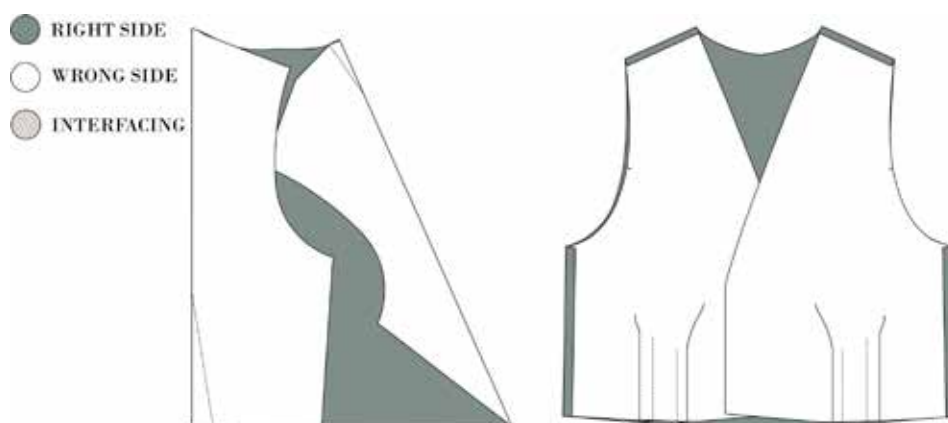
1. Cut all your pieces in fabric and interfacing.
2. Press the interfacing to the front edge (F).

SEW THE BODICE

3. Sew the darts on the back piece, right sides together. Press the darts towards CB.
4. Sew the pleats on the front pieces. Stitch until the marking on the pattern. Press the pleats away from each other.

NOTE: YOU FINISH YOUR SEAM ALLOWANCE BY MAKING FRENCH SEAMS.

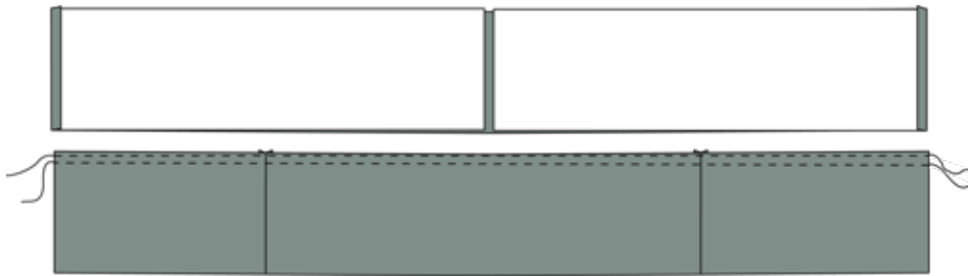
5. Finish the seam allowances of the shoulder seams and side seams.
6. Sew the side seams, right sides together. Press the seam allowances open.
7. Sew the shoulder seams, right sides together. Press the seam allowances open.



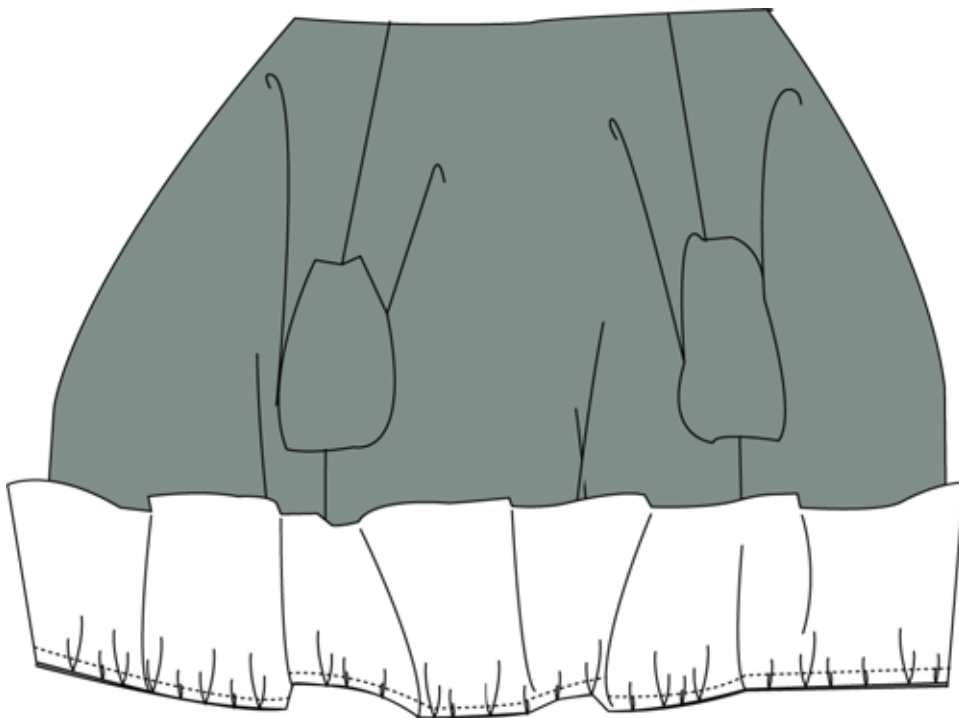


SEW THE PEPLUM

8. Cut one of the peplum pieces in the fold line, so you have a total of three peplum pieces.
9. Finish the raw edges of the peplums side seams (the short sides).
10. Sew the side seams, right sides together. Press the seam allowances open.
11. Finish the peplum with either a narrow hem or a rolled seam. There is 1 cm allowance.

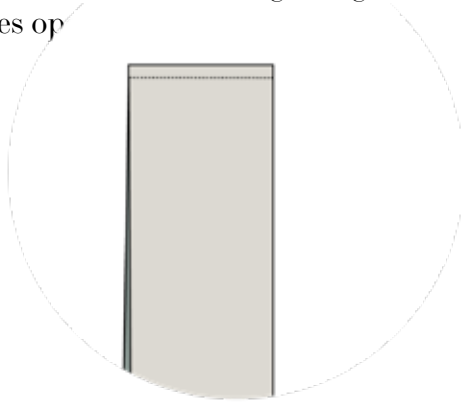


12. Gather the peplum to fit the bodice hem. Sew the peplum to the bodice, right sides together.
13. Overlock/zig zag the waist seam, all layers at once. You can also finish it with bias tape.



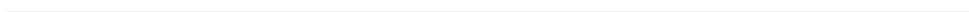
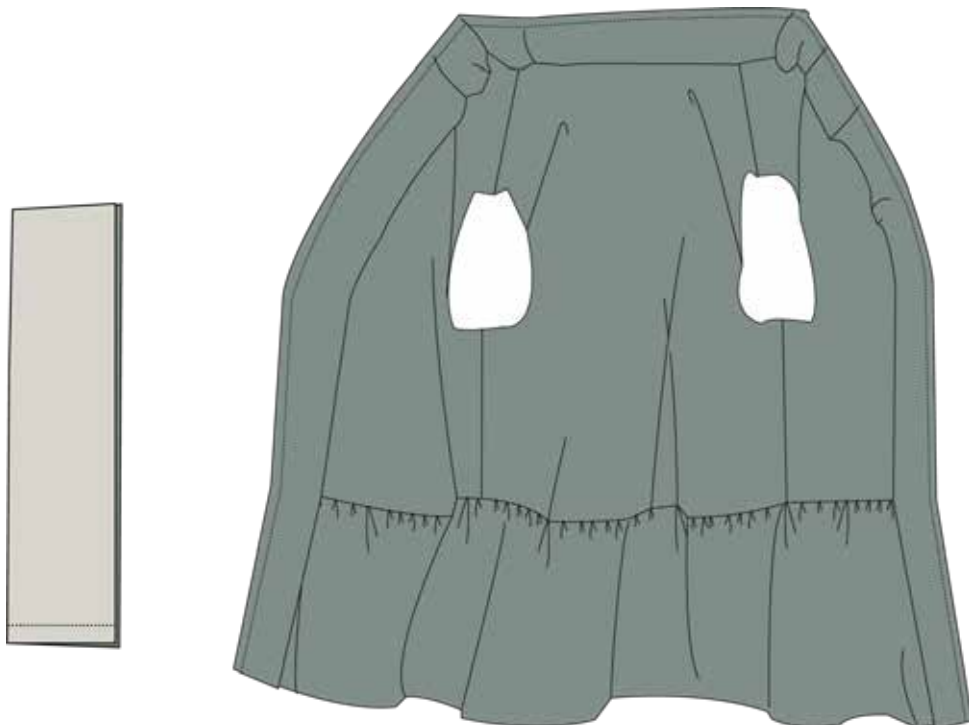


14. Sew the CB seam of the neckline edge, right sides together. Press the seam allowances open.



15. Fold the neckline edge on the long side, right sides together, and stitch the ends. Turn to the right side and press.

16. Place the folded neckline edge on the blouse, right sides together. Stitch it in place along the edge, overlock/zigzag the seam allowances together or finish with bias tape.





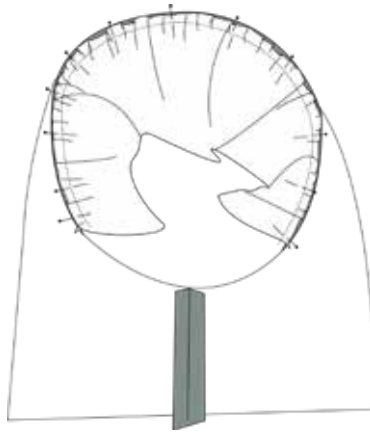
SEW THE SLEEVES

17. Finish the sleeves, the straight edge, with either a narrow hem or a rolled seam. There is 1 cm allowance.

18. Gather both sleeves so they fit the distance between the two notches in the armscye. Sew the sleeves to the armscye, right sides together.



19. Use bias tape to finish the armcyes seam allowance neatly.



20. Sew snaps to the front edge.
