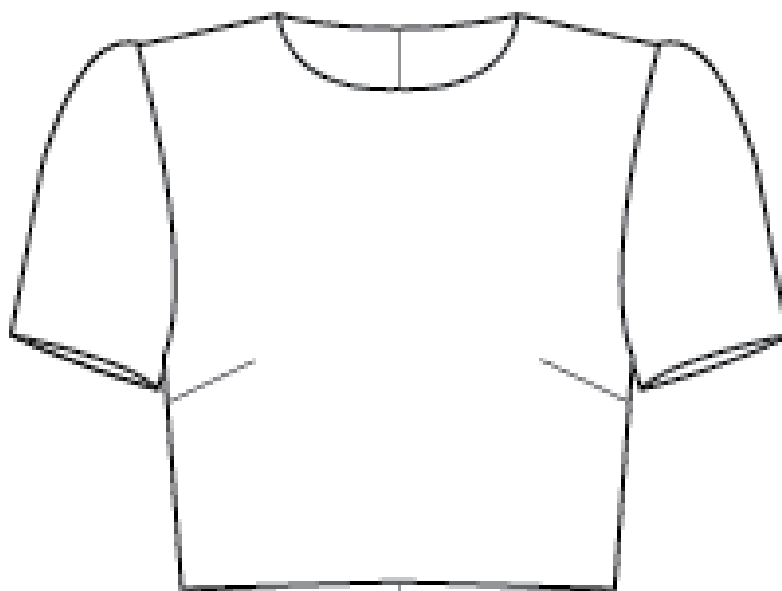




NO. 8 SVANEKE



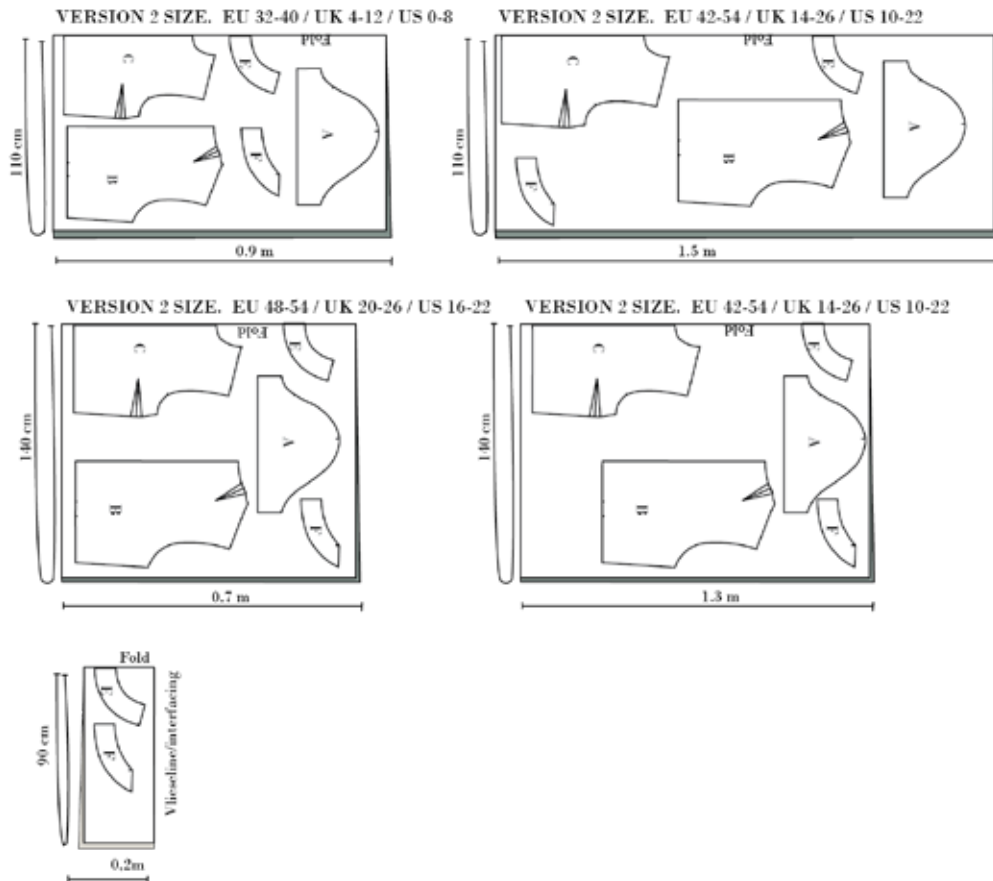
VERSION 2





Cutting Fabric:

Each pattern piece is marked with a capital letter. On the cutting layout plan, you'll find the same capital letters so that you can easily see which pattern pieces to use for the view you've chosen.



NB! ADD 1 CM AT CB TO PATTERN PIECE B. ALSO CUT INTERFACING WITH PIECES E & F.



Sewing instructions

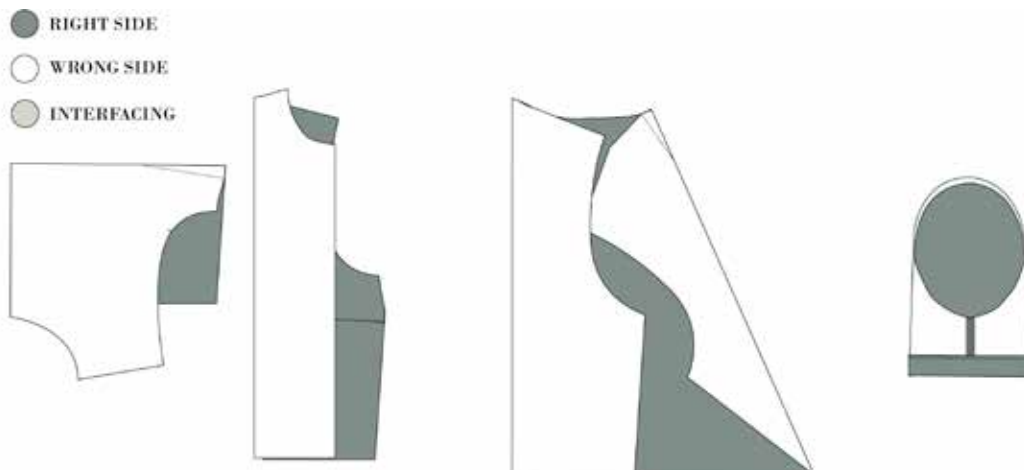
NB! The pattern has 1 cm seam allowances included, unless otherwise noted.

NOTE! You can finish all side, shoulder and sleeve seams with a french seam, if you like a better finish on the inside.

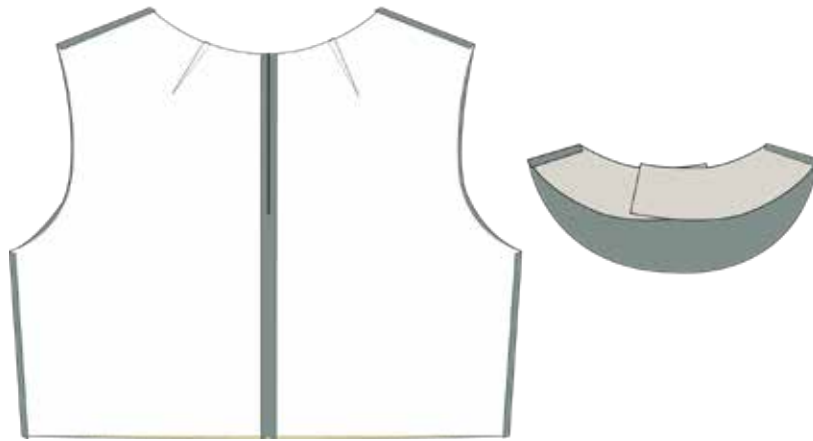
1. Cut all your pieces in fabric and interfacing
2. Press the interfacing to the facing pieces.

SEW THE BLOUSE

3. Sew the darts on the front piece and the back piece. Press the bust darts upwards and the shoulder darts towards CB
4. Finish the seam allowances of the shoulder seams, side seams and sleeve seams.
5. Sew the sleeve seam, right sides together. Press the seam allowances open.
6. Finish the hem allowance of the sleeves and hem the sleeves with a 2 cm hem.



7. Sew the zipper to the CB and sew the CB seam. Press the seam allowances open.
 8. Sew the side seams, right sides together and press the seam allowances open.
-



9. Sew the shoulder seams, right sides together, of both blouse and facing, press the seam allowances open.

10. Sew the facing to the neckline, right sides together.

11. Understitch the facing and clip notches to the seam allowances



12. Hand stitch the facing to the zipper.

13. Set in the sleeves. Note that the sleeves have a front and back and that the sleeve cap has ease.

