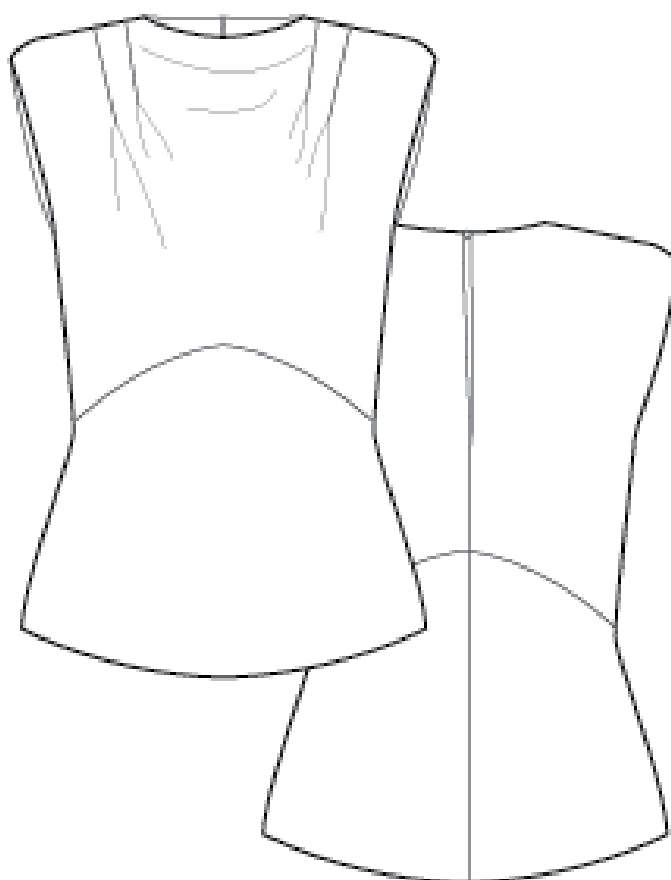




# NO. 7 VANLØSE

---



---

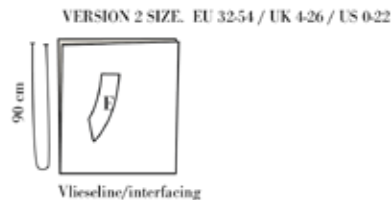
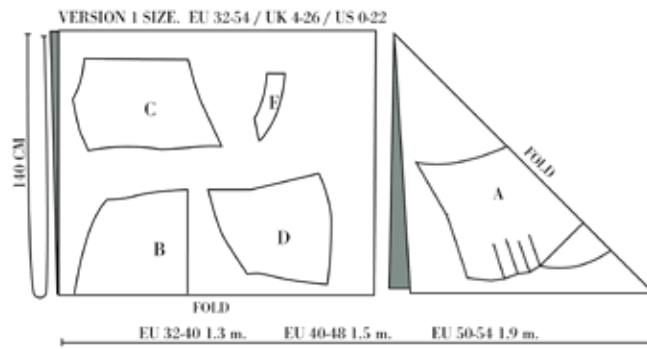
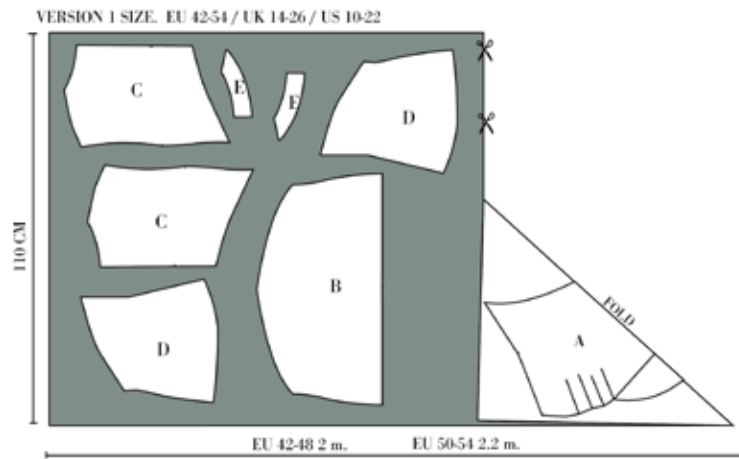
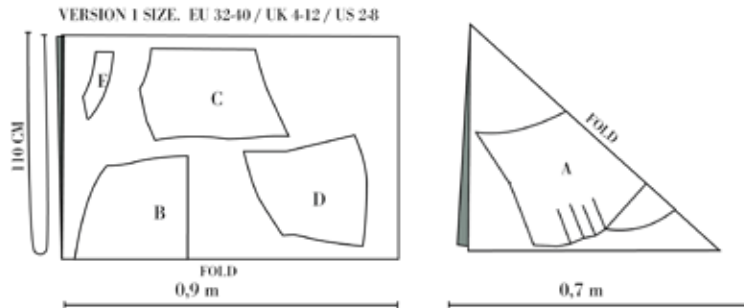
VERSION 1





## CUTTING

On each pattern piece, you will find a capital letter. On the cutting layout plan, you will find the same capital letters so that you can easily see which pattern pieces to use for the view you have chosen.





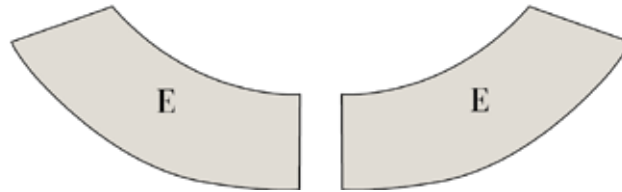
---

## Sewing

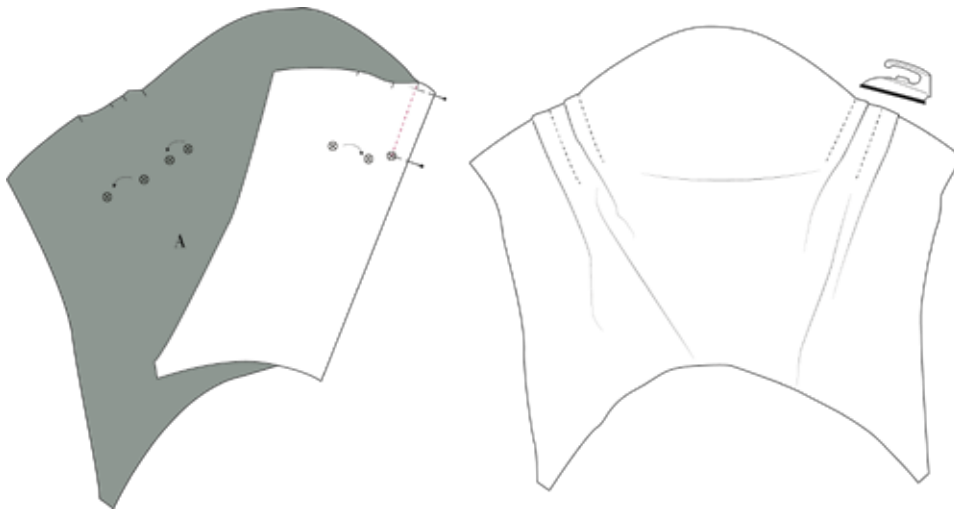
**NOTE! THE PATTERN HAS 1 CM SEAM ALLOWANCES INCLUDED UNLESS OTHERWISE NOTED.**

1. Cut all your pieces in fabric and interfacing as needed.
2. Press the interfacing to the neck facing(E)

- RIGHT SIDE
- WRONG SIDE
- INTERFACING

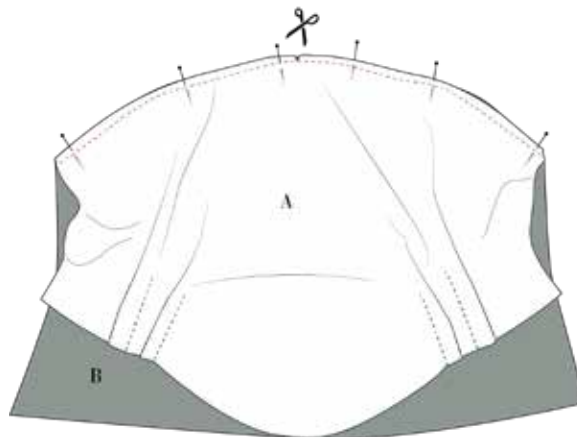


3. Sew the pleats on the front (A) right sides together. Fold according to the notches and markings.



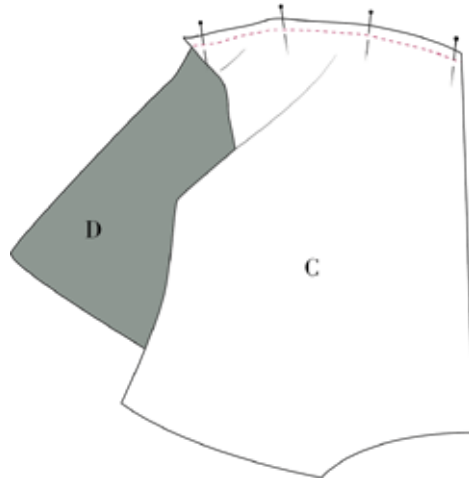
4. Sew the front (A) and lower front (B) in the cut line, with right sides together.

To get the most even seam, make a notch of 0.5 cm at the centre front to pattern piece (A); then, it will also be easier to sew the two pieces together.





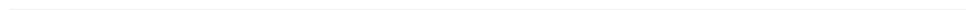
- 
5. Sew the back (C) and lower back together (D) in the cutline, with right sides together.



6. Finish the seams of:

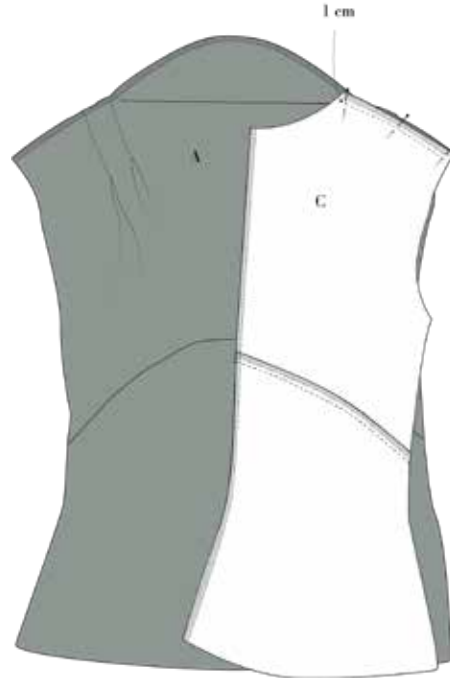
Do it with an overlock, zig-zag or bias tape.

- Cutline at the front, all layers together. Press the seam upwards.
- Cutline at the back, all layers together. Press the seam upwards.
- Shoulder and neckline out front.
- Shoulder at the back.
- The long seam of the neck facing.
- Centre back seam.

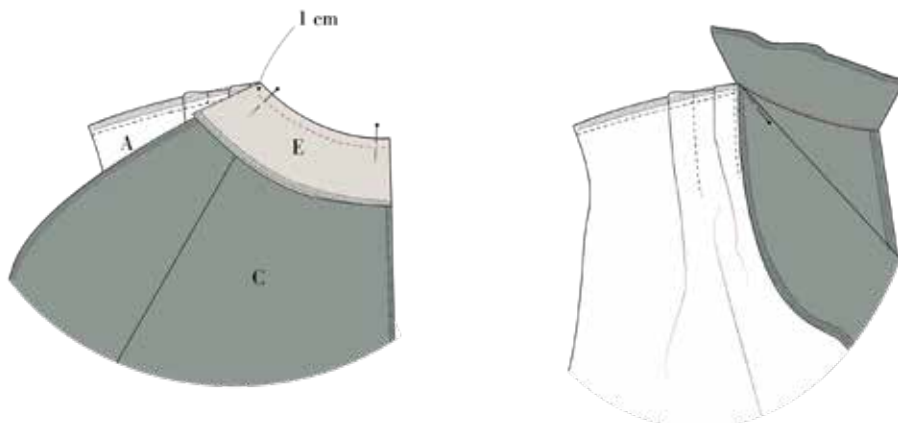




- 
7. At front: fold the neckline with the wrong sides together. See the fold line on the pattern. Mark the seam allowance at the corner.
  8. Sew the shoulder seam, right sides together. Place the folded edge at the front (A) 1 cm from the neckline's raw edge at the back. (C)



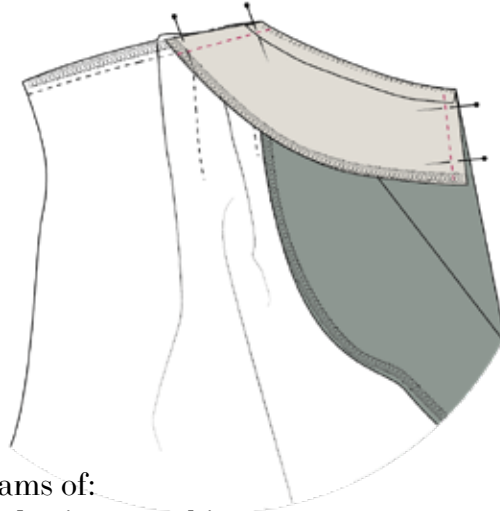
9. Place the neck facing (E) to the back (C) right sides together and sew. Align the seam with the folded edge of the front. (A)
10. Clip notches to the seam allowance and press the seam towards the facing.
11. Under stitch the seam to the facing.





---

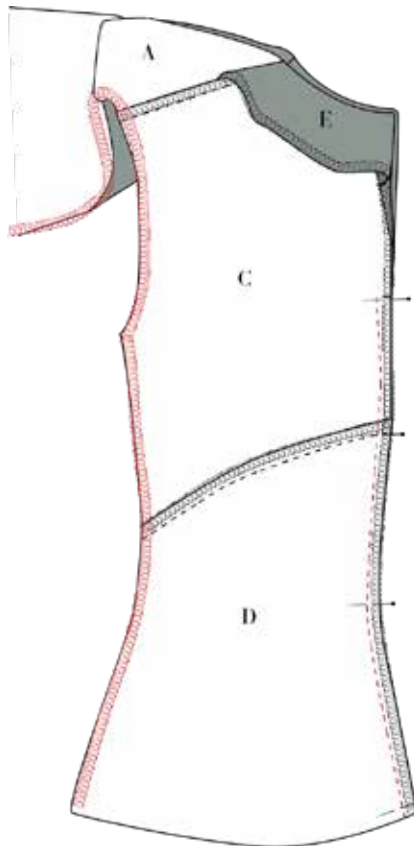
12. Turn the neck facing to the right side, and sew the facing to the back. Turn and press.



13. Finish the seams of:  
Do it with an overlock, zig-zag or bias tape.

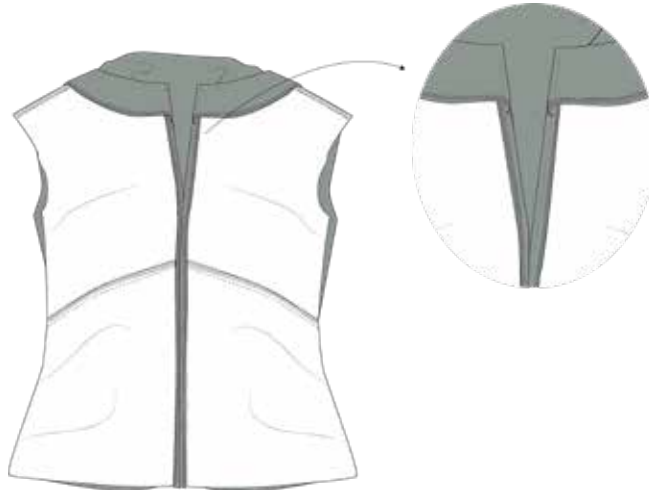
- Side seam and armscye at front.
- Side seam and armscye at back.

14. Sew the centre back seam, stop at notch. Press the seam open.



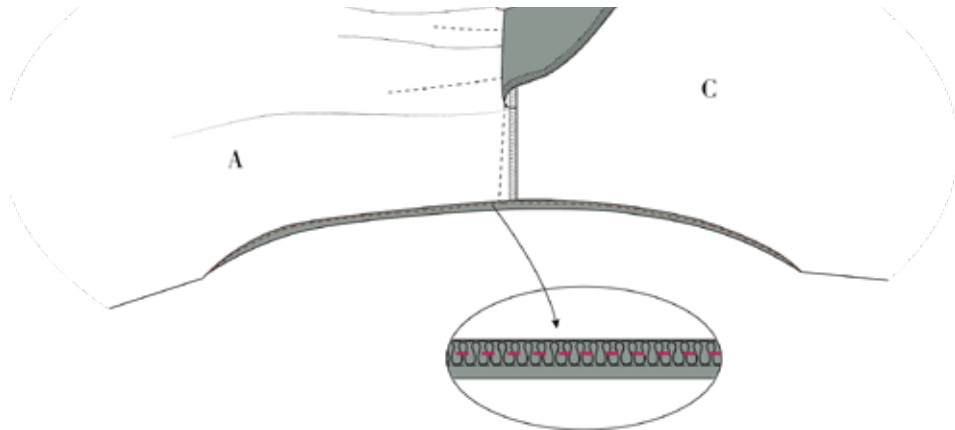


- 
15. Make a topstitch 0.7 cm from the folded edge in the opening of the back.



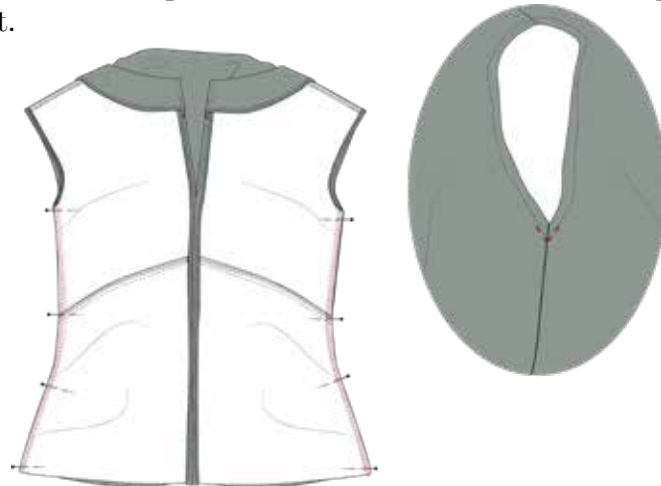
16. Fold the armscye with 1 cm to the wrong side of the blouse, and stop the fold at the markings on both front and back. Alternatively, you can use a narrow hem,

17. Make a topstitch 0.7 cm from the folded edge.



18. Sew the side seams, right sides together. Press the seam open.

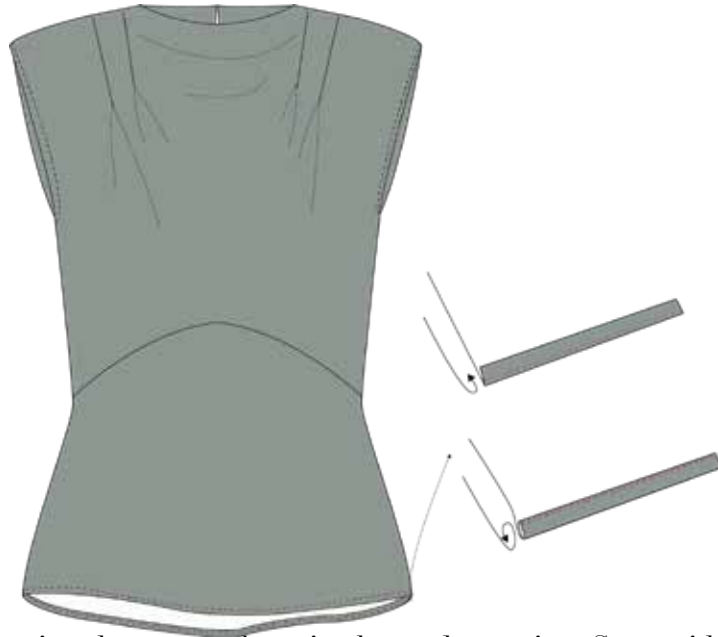
19. Sew an extra topstitch at the bottom of the sleeve opening to reinforce it.





---

20. Hem the blouse with a narrow hem.



21. Sew in a button and eye in the neck opening. See a video on how I make the eye.

