



NO. 4 LONDON



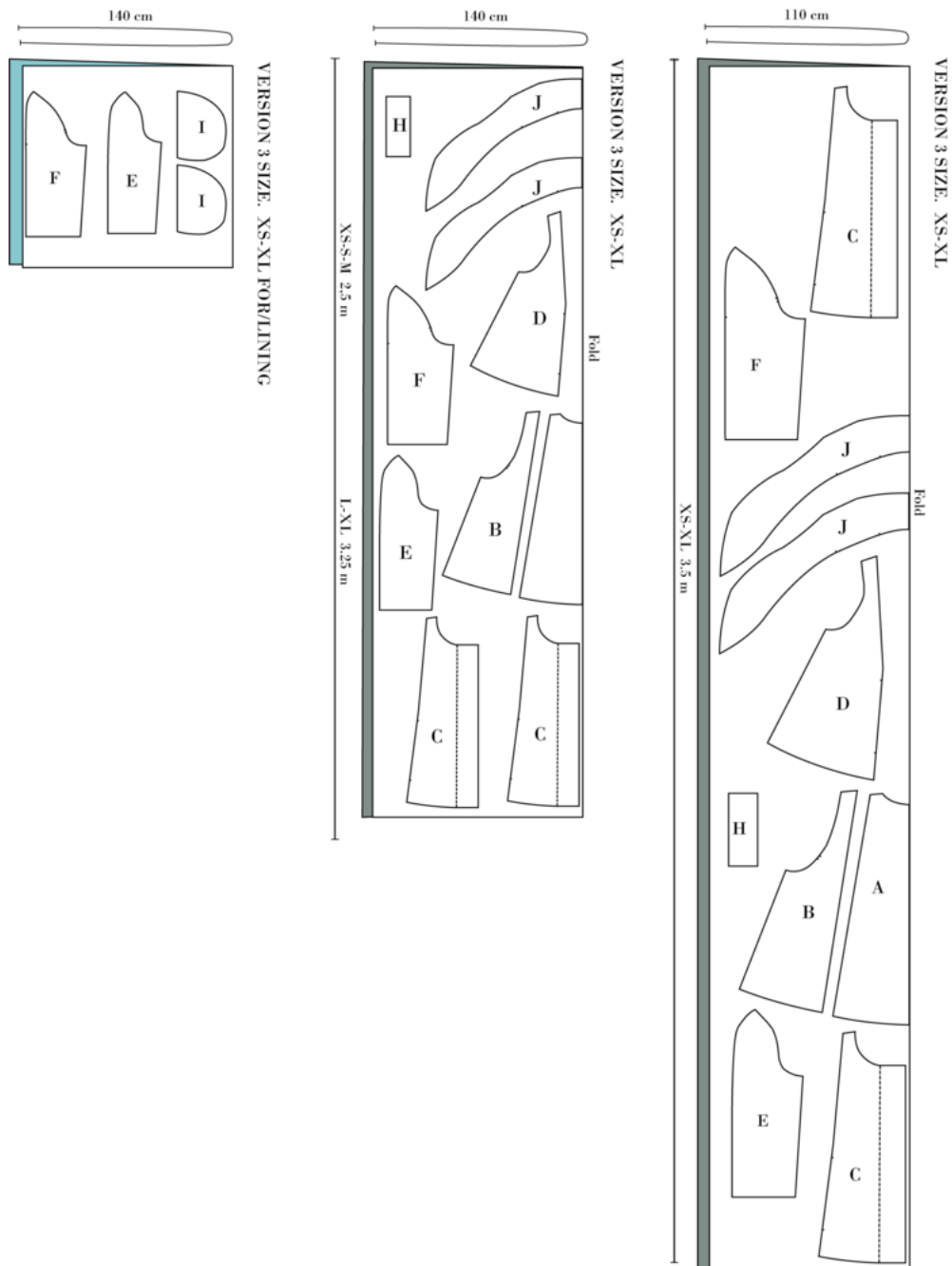
VERSION 3





Cutting Fabric:

Each pattern piece is marked with a capital letter. On the cutting layout plan, you'll find the same capital letters so that you can easily see which pattern pieces to use for the view you've chosen.



NB! PATTERN PIECES C & I CUT X 4

NB! PATTERN PIECES H & C ARE ALSO TO BE CUT IN INTERFACING/FUSING.



Sewing instructions

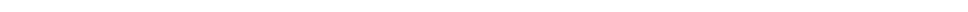
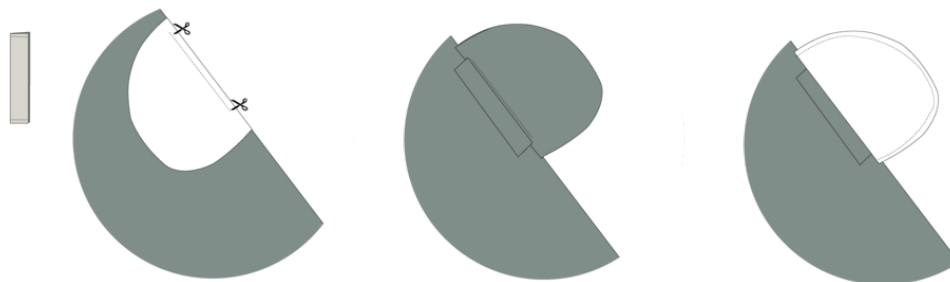
NB! The pattern has 1 cm seam allowances included,
unless otherwise noted.
If more seam allowance is desired you can do so by adding.

1. Cut out all the pieces.
2. Press interfacing on the pocket flaps and on two of the front pieces.
3. Finish all raw edges.

SEW POCKET:

4. Sew and turn the pocket flaps.
5. Place the pocket flap between the notches and a pocket bag on top.
Sew between the notches.
6. Cut notches where the stitching ends and starts.
7. Understitch the pocket bag
8. Place another pocket bag on top and sew the pocket bags together.
9. Overlock/zig zag the pocket bag.

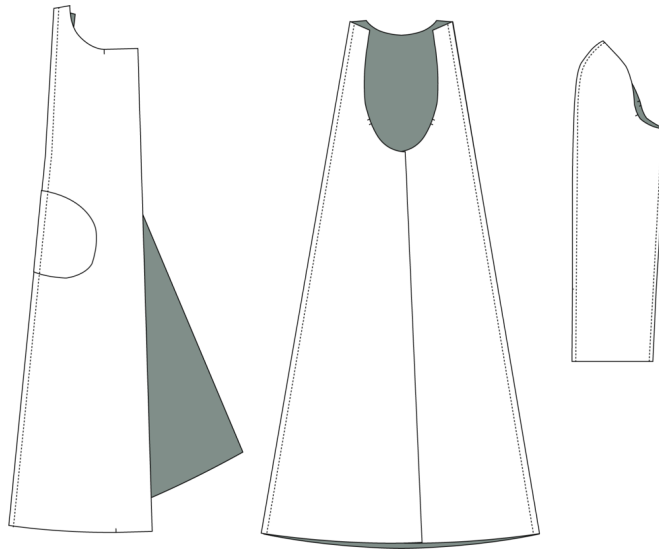
- RIGHT SIDE
- WRONG SIDE
- INTERFACING



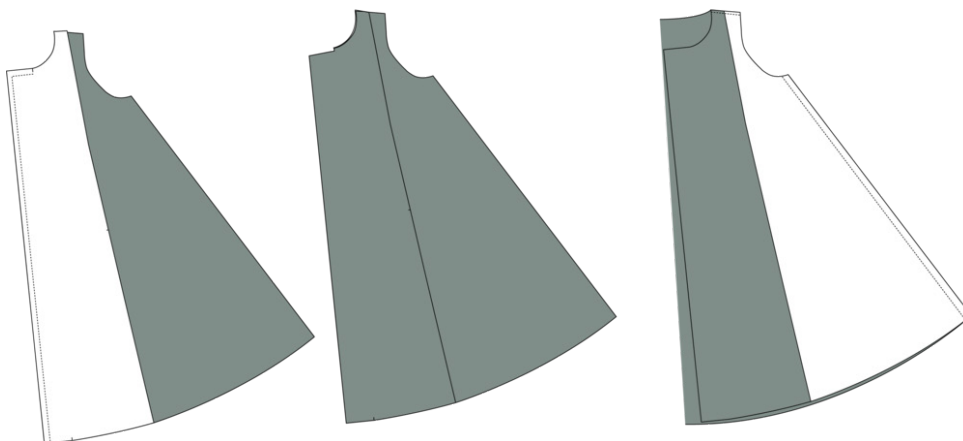


SEW JACKET:

10. Sew the CF piece together with the side front piece, right sides together
11. Sew the CB piece together with the side back piece, right sides together, press seam open.
12. Sew front and back sleeve together in the long seam and inner seam, right sides together, press seam open.
13. Do the same on sleeve lining, cut 1 cm of the bottom edge.

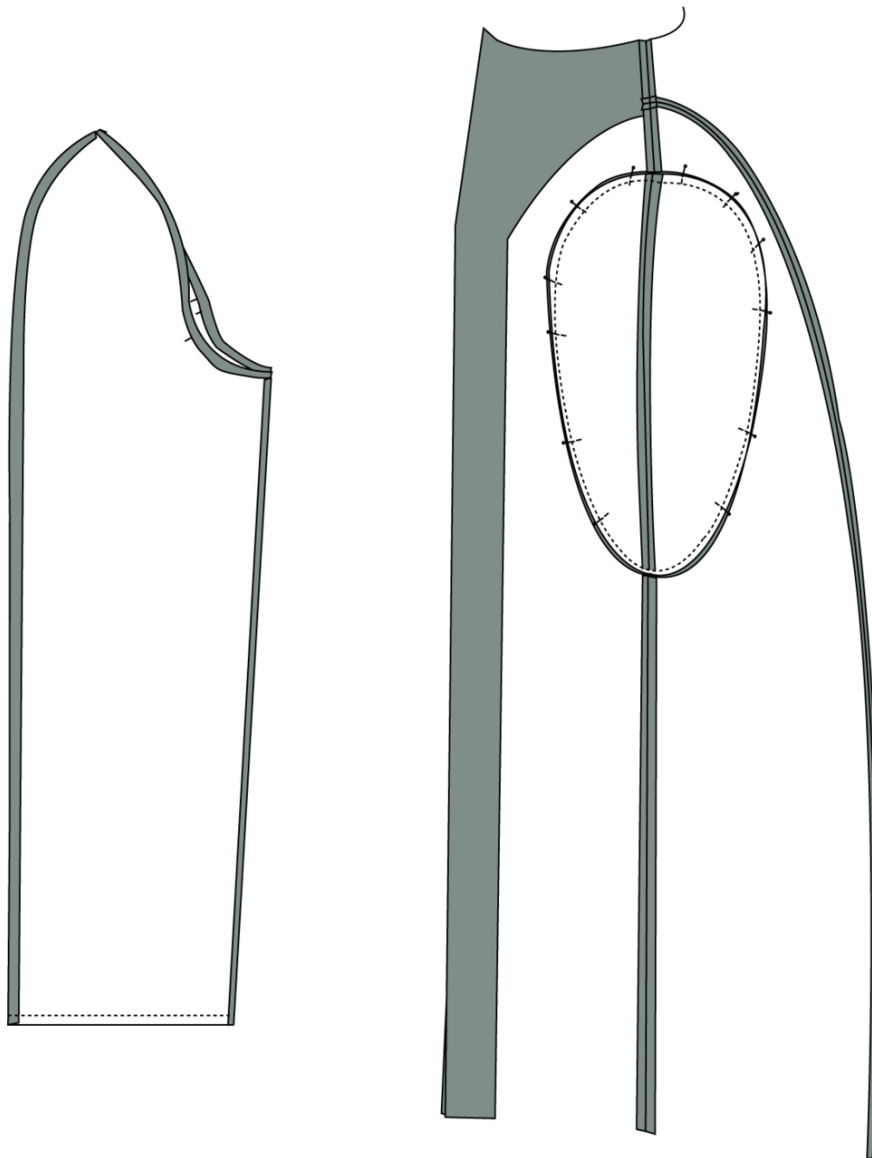


14. Sew the facing on to the front piece from notch to bottom, right sides together. Turn, press and cut a small notch at CF so the seam allowance in neck can be turned out.
15. Sew the side seam together, right sides together, press seam open.
16. Sew the shoulder seam together, right sides together. Press seam open.





-
17. Sew together fabric and lining in the bottom of the sleeves, right sides together. Turn lining in to the fabric sleeve.
 18. Fold up the fabric sleeve 4 cm and press.
 19. Sew sleeve into the armhole, all layers together.
NB! There is a front and a back sleeve.
 20. Finish the seam of the armhole all layers together.



NB! Now you have a jacket and are ready to sew the collar.



SEW COLLAR:

21. Sew the two collar pieces together, right sides together, Stop at the first notch. Turn and press.
22. Place the lower part of the collar in the neckline, right sides together. The notches have to fit at shoulder seam and CF. Facing has to be sewn into the seam allowance.
23. Press the seam allowance inside the collar
24. Press the seam allowance of the upper collar, inside the collar and sew.
25. Hem the jacket with a bias band.

