



NO. 4 LONDON



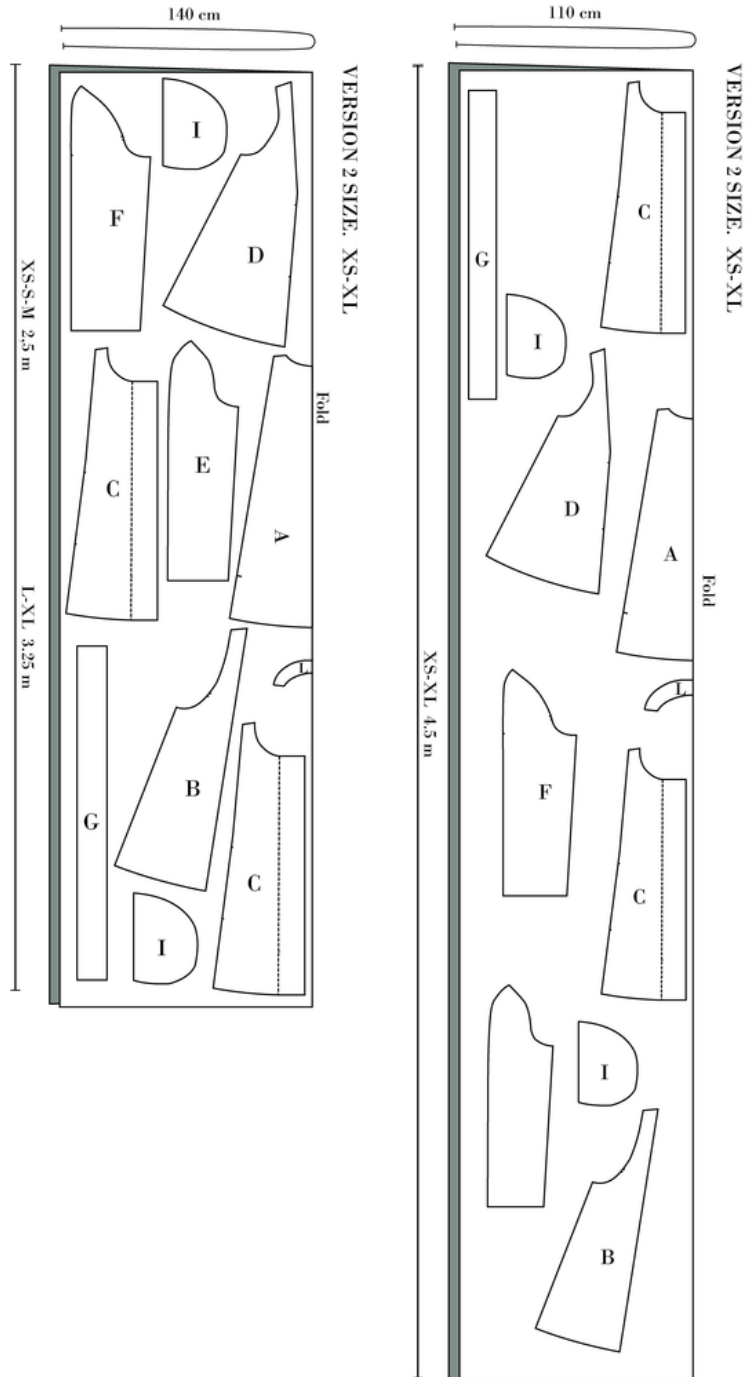
VERSION 2





Cutting Fabric:

Each pattern piece is marked with a capital letter. On the cutting layout plan, you'll find the same capital letters so that you can easily see which pattern pieces to use for the view you've chosen.



NB! PATTERN PIECES C & I CUT X 4.
NB! PATTERN PIECES L IS ALSO TO BE CUT IN INTERFACING.



Sewing instructions

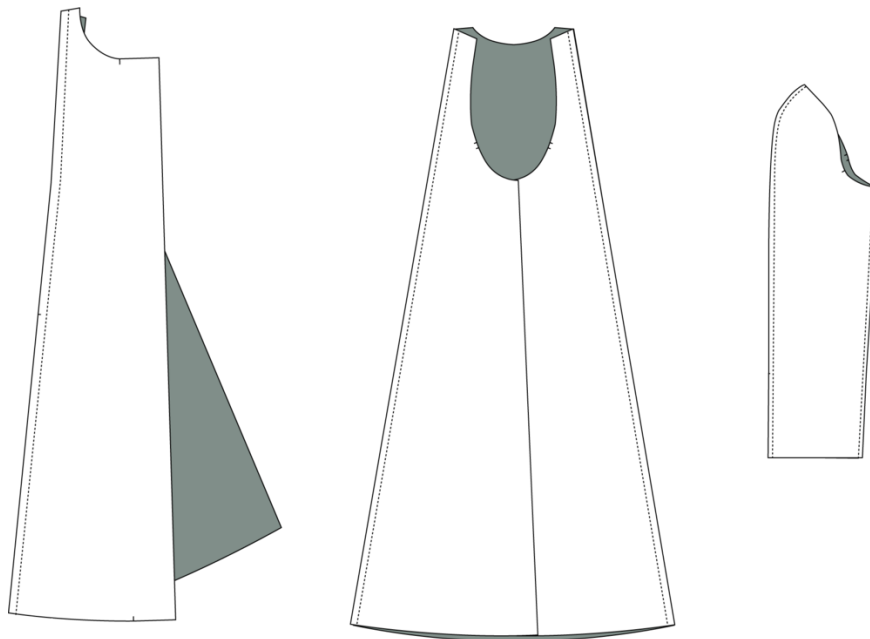
NB! The pattern has 1 cm seam allowances included,
unless otherwise noted.
If more seam allowance is desired you can do so by adding.

1. Cut out all the pieces.
2. Overlock/zigzag all raw edges, if the fabric is wool felt this is not necessary.
3. Press interfacing on the neck facing.

SEW JACKET:

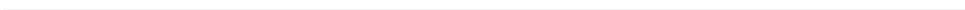
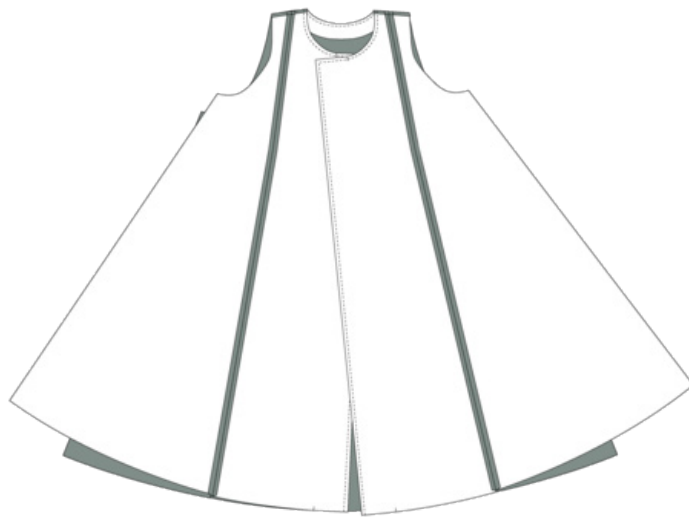
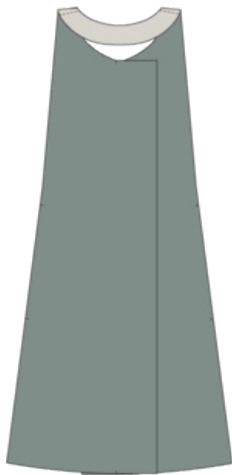
4. Sew the CF piece together with the side front piece, right sides together, press seam open.
5. Sew the CB piece together with the side back piece, right sides together, press seam open.
6. Sew front and back sleeve together in the long seam, right sides together, press seam open.

- RIGHT SIDE
- WRONG SIDE
- INTERFACING





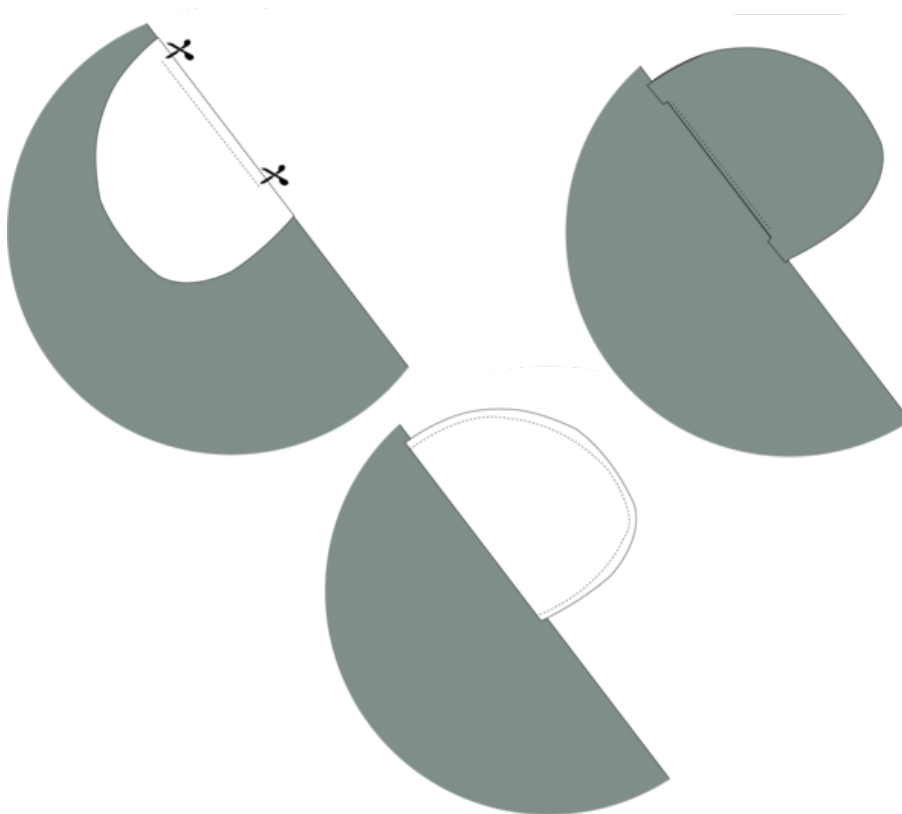
-
7. Sew the shoulder seams with right sides together.
 8. With right sides together, sew the neck facing to the front facing at shoulder, press seam open.
 9. Sew the facing to the jacket, right sides together, in at front and in neckline,
 10. Understitch the facing and clip notches to the seam allowances. Turn and press
 11. Sew with catch stitch the facing to the CF line and shoulder seam.





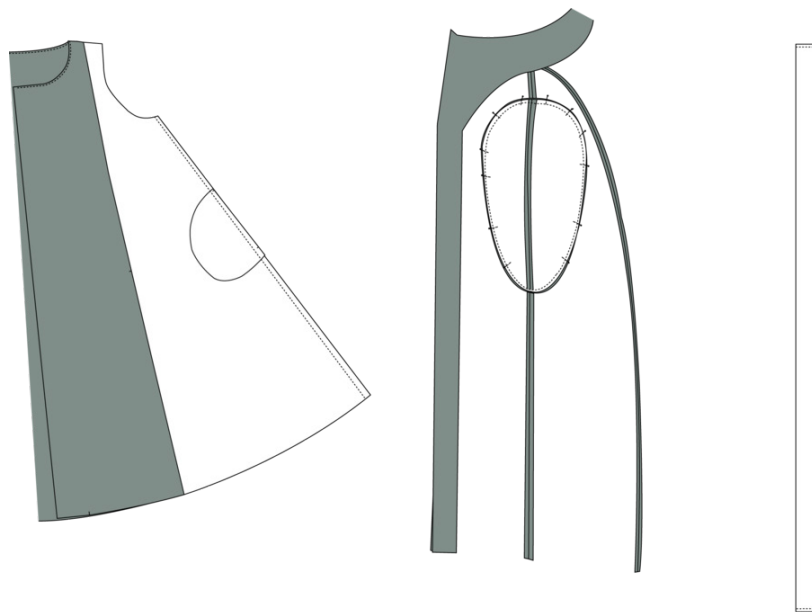
SEW POCKET:

12. Place a pocket bag onto the jacket and sew between notches approx. 12 cm
13. Cut notches where the stitching ends and starts.
14. Understitch the pocket bag
15. Place another pocket bag on top and sew the pocket bags together.
16. Finish the edge of the pocket bags all layers together





-
17. Sew the side seam, right sides together.
NB! Be careful not to sew the pocket opening together
 18. Sew in the sleeve. NB! There is a back and front sleeve.
 19. Sew the hemline on both sleeve and bottom. This can be done with raw edges or facing see tips and tricks.
 20. When raw edges are chosen, place a top stitch 0,5 cm, from the edge in both sleeve and bottom
 21. Sew and turn the belt.



22. Sew belt loops at the side seam.

